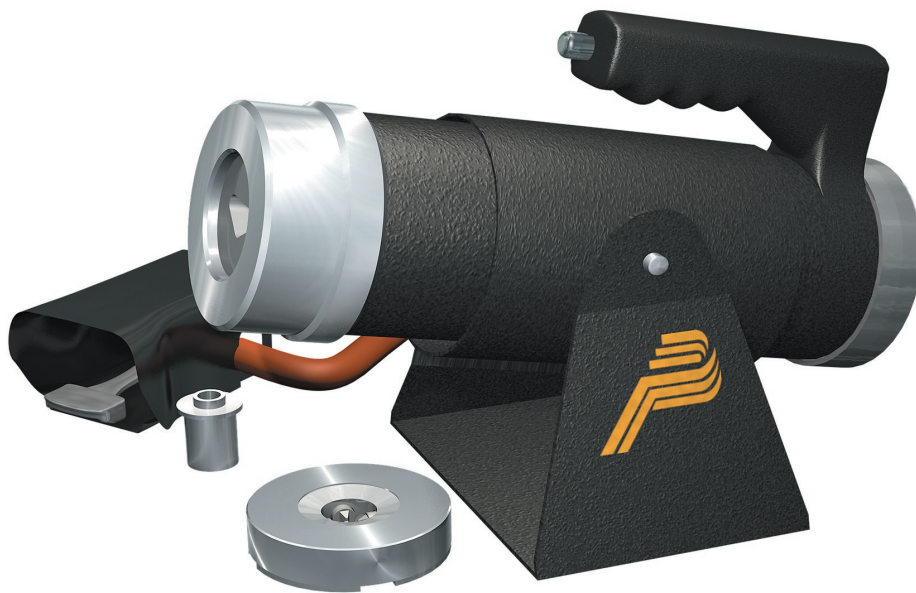




*400 Series*  
*Die & Locator*  
*Cross Reference*  
*Catalog*



---

---

# ***Table of Contents***

---

Table of Contents.....	2
400 Series Tech Sheet .....	3
400 Series Std. Die Applications .....	4
400 Series MIL-C-22520/23 Std Applications.....	5

## ***Terminals:***

Non-Insulated Terminals .....	8-9
Insulated Terminals .....	10-11
MS25189 Flag Terminals .....	12
Solderless Terminals .....	13

## ***Pin & Socket Contacts:***

MS Pin & Skt Contacts .....	14-18
Contact Manufacturer Reference .....	19-33

## ***Misc:***

Pyle National to Pico .....	34
Wearnes Hollingsworth to Pico.....	35

---

**MIL-C-22520/23**

<b>M22520/23-No.</b>	<b>PICO No.</b>	<b>Description</b>
M22520/23-01	400-B-1	POWER UNIT
M22520/23-02	414DA-8N	#8 Die Assembly
M22520/23-03	414DA-6N	#6 Die Assembly
M22520/23-04	414DA-4N	#4 Die Assembly
M22520/23-05	414DA-0N	#0N Die Assembly
M22520/23-06	414DA-2/0N	#2/0 Die Assembly
M22520/23-07	414DA-4/0N-1	#4/0 Die Assembly
M22520/23-09	4046A	#8 Locator
M22520/23-10	4297-6	#6 Locator (Class L)
M22520/23-11	4112	#4 Locator
M22520/23-12	4297-5	#4 Locator (Class L)
M22520/23-13	4066	#1/0 Locator
M22520/23-14	4297-3	#1/0 Locator (Class L)
M22520/23-15	4297-2	#2/0 Locator (Class L)
M22520/23-16	4297-1	#2/0 Locator (Class L)

For complete information, see MIL-C-22520/23 dated January 2, 1979. On governments quality products list - as of May 10th, 1991.



**LOCATOR and DIE ASSEMBLY CATALOG  
for use with**

**PICO MODEL 400 SERIES POWER UNITS**

**Order by Locator No. and /or Die assembly No.  
Effective March 1st, 2002**

**Version 1.0**

**NOTE:** Contacts or terminals which may not be listed in the current catalog can usually be satisfactorily crimped with stock dies. We would be pleased to study your needs in this category, and advise you whether special dies would be required.

---

**SOLDERLESS TERMINAL (LUGS) - CLOSED BARREL TYPES**  
**"NIT" NON-INSULATED TERMINALS "IT" INSULATED TERMINALS**

There are three basic methods used in the manufacture of closed barrel style solderless terminals, These variations affect the selection of proper die assemblies and locators.

1) Terminal made from **FLAT STOCK**:

Flat stock terminals have a greater wall thickness than tube stock, solid stock or cold headed. Forming of flat stock into a round crimp barrel results in a seam down the longitudinal axis of the barrel. This seam is usually brazed. The die sets used with terminals, which have a seam, have a concave profile on the indenter that is aligned with the seam. The purpose of this concave profile is to capture the seam and prevent separation during the crimp process. There are several manufacturers of flat stock terminals. Among them are Amp, ETC, 3M, Ideal and Wearnes Hollingsworth Corp.

2) Terminals made from **TUBE STOCK**:

Burndy and Thomas and Betts manufacture terminals in smaller sizes using both flat and tube stock (22-18 thru 12-10), Larger sizes are made from tube stock (8 thru 2/0). All four indentors in the die sets used with tube stock terminals are the same and produce four symmetrical indentations. These die sets are identified with a "-B" suffix.

3) Terminals made from **SOLID STOCK AND COLD HEADED**:

Contact Pico Corporation for proper die assemblies and locators for these terminal styles..

In most cases the same locator will perform satisfactorily for **"IT" INSULATED** and **"NIT" NON-INSULATED TERMINALS**, but a locator for a tube stock terminal will not work with a flat stock terminal.

Special dies and locators are available for flag and right angle terminals. If you are in doubt, please contact Pico Corporation.

## NON-INSULATED TERMINALS - MS20659

MS20659		GROUP 1		T & B		BURNDY	
Dash No.	SIZE	414DA-	LOC	414DA-	LOC	414DA-	LOC
-138	22-18	22-18 NIT	5001	22-18	5001	22-18	5001-2
-101	22-18	22-18 NIT	5001	22-18	5001	22-18	5001-2
-102	22-18	22-18 NIT	5001	22-18	5001	22-18	5001-2
-161	22-18	22-18 NIT	5001	22-18	5001	22-18	5001-2
-125	22-18	22-18 NIT	5001	22-18	5001	22-18	5001-2
-162	22-18	22-18 NIT	5001	22-18	5001	22-18	5001-2
-139	16-14	16-14 NIT	5002	16-14 NIT	5002	16-14 NIT	5002-2
-103	16-14	16-14 NIT	5002	16-14 NIT	5002	16-14 NIT	5002-2
-126	16-14	16-14 NIT	5002	16-14 NIT	5002	16-14 NIT	5002-2
-104	16-14	16-14 NIT	5002	16-14 NIT	5002	16-14 NIT	5002-2
-163	16-14	16-14 NIT	5002	16-14 NIT	5002	16-14 NIT	5002-2
-127	16-14	16-14 NIT	5002	16-14 NIT	5002	16-14 NIT	5002-2
-164	16-14	16-14 NIT	5002	16-14 NIT	5002	16-14 NIT	5002-2
-165	12-10	12-10 NIT	5003	12-10NIT	5003	12-10 NIT	5003-2
-105	12-10	12-10 NIT	5003	12-10NIT	5003	12-10 NIT	5003-2
-106	12-10	12-10 NIT	5003	12-10NIT	5003	12-10 NIT	5003-2
-128	12-10	12-10 NIT	5003	12-10NIT	5003	12-10 NIT	5003-2
-166	12-10	12-10 NIT	5003	12-10NIT	5003	12-10 NIT	5003-2
-140	8	8NIT	5008-1	8 NIR-B	5056	8 NIT-B	5035
-107	8	8NIT	5008-1	8 NIR-B	5056	8 NIT-B	5035
-141	8	8NIT	5008-1	8 NIR-B	5056	8 NIT-B	5035
-108	8	8NIT	5008-1	8 NIR-B	5056	8 NIT-B	5035
-129	8	8NIT	5008-1	8 NIR-B	5056	8 NIT-B	5035
-142	8	8 NIT	5008-1W	8 NIT-B	5056W	8 NIT-B	5035W
-130	6	6 NIT	5006-1	6NIT-b	5055	6 NIT-B	5034
-109	6	6 NIT	5006-1	6-NIT-B	5055	6 NIT-B	5034
-131	6	6 NIT	5006-1	6 NIT-B	5055	6 NIT-B	5034
-110	6	6 NIT	5006-1	6 NIT-B	5055	6 NIT-B	5034
-143	6	6 NIT	5006-1W	6 NIT-B	5055W	6 NIT-B	5034W
-144	4	4NIT	5007	4 NIT-B	5054	4 NIT-B	5033

---

**NON-INSULATED TERMINALS - MS20659**

<b>MS20659</b>		<b>GROUP 1</b>		<b>T &amp; B</b>		<b>BURNDY</b>	
<b>Dash NO.</b>	<b>SIZE</b>	<b>414DA-</b>	<b>LOC</b>	<b>414DA-</b>	<b>LOC</b>	<b>414DA-</b>	<b>LOC</b>
-111	4	4NIT	5007	4 NIT-B	5054	4 NIT-B	5033
-132	4	4NIT	5007	4 NIT-B	5054	4 NIT-B	5033
-112	4	4NIT	5007	4 NIT-B	5054	4 NIT-B	5033
-145	4	4 NIT	5007W	4 NIT-B	5054W	4 NIT-B	5033W
-146	2	2 NIT	5007-1	2 NIT-B	5052	2 NIT-B	5032-4
-113	2	2 NIT	5007-1	2 NIT-B	5052	2 NIT-B	5032-4
-147	2	2 NIT	5007-1	2 NIT-B	5052	2 NIT-B	5032-4
-114	2	2 NIT	5007-1	2 NIT-B	5052	2 NIT-B	5032-4
-148	2	2 NIT	5007-1	2 NIT-B	5052	2 NIT-B	5032-4
-133	2	2 NIT	5007-1	2 NIT-B	5052	2 NIT-B	5032-4
-115	1	1 NIT	5009-2	1 NIT-B	5032-3	1 NIT-B	5032-1
-149	1	1 NIT	5009-2	1 NIT-B	5032-3	1 NIT-B	5032-1
-116	1	1 NIT	5009-2	1 NIT-B	5032-3	1 NIT-B	5032-1
-150	1	1 NIT	5009-2	1 NIT-B	5032-3	1 NIT-B	5032-1
-134	1	1 NIT	5009-2	1 NIT-B	5032-3	1 NIT-B	5032-1
-117	0	0 NIT	5039-1	0 NIT-B	5049-1	0 NIT-B	5031-1
-151	0	0 NIT	5039-1	0 NIT-B	5049-1	0 NIT-B	5031-1
-118	0	0 NIT	5039-1	0 NIT-B	5049-1	0 NIT-B	5031-1
-152	0	0 NIT	5039-1	0 NIT-B	5049-1	0 NIT-B	5031-1
-135	0	0 NIT	5039-1	0 NIT-B	5049-1	0 NIT-B	5031-1
-153	0	2/0 NIT	5039-1	2/0 NIT-B	5050-1	2/0 NIT-B	5030-1
-119	0	2/0 NIT	5039-1	2/0 NIT-B	5050-1	2/0 NIT-B	5030-1
-120	0	2/0 NIT	5039-1	2/0 NIT-B	5050-1	2/0 NIT-B	5030-1
-154	0	2/0 NIT	5039-1	2/0 NIT-B	5050-1	2/0 NIT-B	5030-1
-136	0	2/0 NIT	5039-1	2/0 NIT-B	5050-1	2/0 NIT-B	5030-1

---

**INSULATED TERMINALS - MS25036**

<b>MS25036</b>	<b>SIZE</b>	<b>GROUP 1</b>		<b>T &amp; B</b>		<b>BURNDY</b>	
		<b>414DA-</b>	<b>LOC</b>	<b>414DA-</b>	<b>LOC</b>	<b>414DA-</b>	<b>LOC</b>
<b>Dash No.</b>							
-143	26-24	26-24 IT	5001	26-24 IT	5001	26-24IT	5001
-144	26-24	26-24 IT	5001	26-24 IT	5001	26-24IT	5001
-145	26-24	26-24 IT	5001	26-24 IT	5001	26-24IT	5001
-146	26-24	26-24 IT	5001	26-24 IT	5001	26-24IT	5001
-147	26-24	26-24 IT	5001	26-24 IT	5001	26-24IT	5001
-148	22-18	22-18 IT	5001	22-18-IT	5001	22-18 IT	5001
-101	22-18	22-18 IT	5001	22-18-IT	5001	22-18 IT	5001
-102	22-18	22-18 IT	5001	22-18-IT	5001	22-18 IT	5001
-149	22-18	22-18 IT	5001	22-18-IT	5001	22-18 IT	5001
-103	22-18	22-18 IT	5001	22-18-IT	5001	22-18 IT	5001
-150	22-18	22-18 IT	5001	22-18-IT	5001	22-18 IT	5001
-104	22-18	22-18 IT	5001	22-18-IT	5001	22-18 IT	5001
-105	22-18	22-18 IT	5001	22-18-IT	5001	22-18 IT	5001
-151	22-18	22-18 IT	5001	22-18-IT	5001	22-18 IT	5001
-152	16-14	16-14 IT	5002	16-14 IT	5002	16-14 IT	5002
-106	16-14	16-14 IT	5002	16-14 IT	5002	16-14 IT	5002
-107	16-14	16-14 IT	5002	16-14 IT	5002	16-14 IT	5002
-153	16-14	16-14 IT	5002	16-14 IT	5002	16-14 IT	5002
-108	16-14	16-14 IT	5002	16-14 IT	5002	16-14 IT	5002
-154	16-14	16-14 IT	5002	16-14 IT	5002	16-14 IT	5002
-109	16-14	16-14 IT	5002	16-14 IT	5002	16-14 IT	5002
-110	16-14	16-14 IT	5002	16-14 IT	5002	16-14 IT	5002
-155	16-14	16-14 IT	5002	16-14 IT	5002	16-14 IT	5002
-111	12-10.	12-10 IT	5003	12-10IT	5003	12-10 IT	5003
-156	12-10.	12-10 IT	5003	12-10IT	5003	12-10 IT	5003
-112	12-10.	12-10 IT	5003	12-10IT	5003	12-10 IT	5003
-157	12-10.	12-10 IT	5003	12-10IT	5003	12-10 IT	5003
-113	12-10.	12-10 IT	5003	12-10IT	5003	12-10 IT	5003
-114	12-10.	12-10 IT	5003	12-10IT	5003	12-10 IT	5003
-158	12-10.	12-10 IT	5003	12-10IT	5003	12-10 IT	5003

## INSULATED TERMINALS - MS25036

MS25036 Dash No.	SIZE	GROUP 1		T & B		BURNDY	
		414DA-	LOC	414DA-	LOC	414DA-	LOC
-115	8	8 IT	5008-1	8 IT-B	5056	8 IT-B	5035
-116	8	8 IT	5008-1	8 IT-B	5056	8 IT-B	5035
-117	8	8 IT	5008-1	8 IT-B	5056	8 IT-B	5035
-118	8	8 IT	5008-1	8 IT-B	5056	8 IT-B	5035
-119	6	6 IT	5006-1	6 IT-B	5055	6 IT-B	5034
-120	6	6 IT	5006-1	6 IT-B	5055	6 IT-B	5034
-121	6	6 IT	5006-1	6 IT-B	5055	6 IT-B	5034
-122	6	6 IT	5006-1	6 IT-B	5055	6 IT-B	5034
-123	4	4 IT	5007	4 IT-B	5054	4 IT-B	5033
-124	4	4 IT	5007	4 IT-B	5054	4 IT-B	5033
-125	4	4 IT	5007	4 IT-B	5054	4 IT-B	5033
-126	2	2 IT	5007-1	2 IT-B	5052	2 IT-B	5032-4
-127	2	2 IT	5007-1	2 IT-B	5052	2 IT-B	5032-4
-128	2	2 IT	5007-1	2 IT-B	5052	2 IT-B	5032-4
-129	1	1 IT	5009-2	1 IT-B	5032-3	1 IT-B	5032-1
-130	1	1 IT	5009-2	1 IT-B	5032-3	1 IT-B	5032-1
-131	1	1 IT	5009-2	1 IT-B	5032-3	1 IT-B	5032-1
-132	0	0 IT	5039-1	0 IT-B	5049-1	0 IT-B	5031-1
-133	0	0 IT	5039-1	0 IT-B	5049-1	0 IT-B	5031-1
-134	0	0 IT	5039-1	0 IT-B	5049-1	0 IT-B	5031-1
-102	8	-8 NIT-108	5065				
-103	8	-8 NIT-108	5065				
-107	6	-6 NIT-106	5066				
-108	6	-6 NIT-106	5066				
-112	4	-4 NIT-107	5067				
-113)	4	-4 NIT-107	5067				
-115)	4	-4 NIT-107	5067				
-118	2	-2 NIT-109	5068				
-119)	2	-2 NIT-109	5068				

**NOTE:**

GROUP 1 - AMP, ETC, HOLLINGSWORTH, 3-M

FOR SIZES #2 AND LARGER, MODEL 400-B HEAVY DUTY POWER UNIT IS RECOMMENDED.

---

**MS25189  
FLAG TERMINALS**

<b>DASH NO.</b>	<b>WIRE</b>	<b>414DA-DIE ASSEMBLY</b>	<b>LOCATOR NO.</b>
-102 -103	8	-8 NIT-108	5065
-107 -108	8-6	-6 NIT-106	5066
-112 -113 -115	4	-4 NIT-107	5067
-118 -119	2	-2 NIT-109	5068

**NOTE:**

WHEN ORDERING FLAG TERMINAL DIES AND LOCATORS, PLEASE SEND FIVE SAMPLES OF EACH SIZE, OR INDICATE MANUFACTURER.

## SOLDERLESS TERMINALS

SIZE	GROUP 1		T & B		BURNDY	
	414DA-	LOC	414DA-	LOC	414DA-	LOC

### NON-INSULATED TERMINALS (See Note 1 )

22-18	22-18 NIT	5001	22-18 NIT	5001	22-18 NIT	5001-2
16-14	16-14 NIT	5002	16-14 NIT	5002	16-14 NIT	5002-2
36138	12-10 NIT	5003	12-10 NIT	5003	12-10 NIT	5003-2
8	8 NIT	5008-1	8 NIT-B	5056	8 NIT-B	5035
6	6 NIT	5006-1	6 NIT-B	5055	6 NIT-B	5034
4	4 NIT	5007	4 NIT-B	5054	4 NIT-B	5033
2	2 NIT	5007-1	2 NIT-B	5052	2 NIT-B	5032-4
1	1 NIT	5009-2	1 NIT-B	5032-3	1 NIT-B	5032-1
O	O NIT	5039-1	O NIT-B	5049-1	O NIT-B	5031-1
2/O	2/O NIT	5039-1	2/O NIT-B	5050-1	2/O NIT-B	5030-1

#### NOTE:

For sizes 8, 6 and 4 Non-Insulated and Insulated terminals with 1/2" stud holes, add suffix "W" to the locator

### INSULATED TERMINALS

22-18	22-18 IT	5001	22-18 IT	5001	22-18 IT	5001
16-14	16-14 IT	5002	16-14 IT	5002	16-14 IT	5002
36138	12-10 IT	5003	12-10 IT	5003	12-10 IT	*5003
8	8 IT	5008-1	8 IT-B	5056	8 IT-B	5035
6	6 IT	5006-1	6 IT-B	5055	6 IT-B	5034
4	4 IT	5007	4 IT-B	5054	4 IT-B	5033
2	2 IT	5007-1	2 IT-B	5052	2 IT-B	5032-4
1	1 IT	5009-1	1 IT-B	5032-3	1 IT-B	5032-1
O	O IT	5039-1	O IT-B	5049-1	O IT-B	5031-1
2/O			2/O IT-B	5050-1	2/O IT-B	5030-1

\*Call Pico for Locator numbers for YAEV series (Tube Stock)

#### NOTE:

For sizes 8, 6 and 4 Non-Insulated with 1/2" stud holes, add suffix "W" to the locator

---

# **PIN & SOCKET CONTACTS**

## MS PIN & SOCKET CONTACTS

MS Contact	Size		Die Assembly P/N	Locator
	Pin	Socket		
<b>SIZE 16</b>				
90453-16-16	16			4116
90454-16-16		16		4116
90453-12-16	16			4116
90454-12-16		16		4116
3162-16-16	16			4116
3163-16-16		16		4116
3163-16S-16		16	414DA-16N	4116
3192-16A	16			4116
3193-16A		16		4116
39029/4-16-16	16			4116
39029/4-12-16	12-16	12-16		4117
39029/5-16-16	16			4116
39029/5-12-16		12-16		4117
39029/15-16-16		16	414DA-16N-4116-3	4116-3
<b>SIZE 12</b>				
87323/33B16	16			4116
83723/34B16		16		4116
83723/30T17		16		4116
83723/30T16		16		4116
83723/29T16	16			4116
83723/33-16	16		414DA-16N	4116 1
83723/34-16		16		4116 1
27490-16		16		4116 1
27655-16		16		4355-3
27491-16		16		4355-3
90453-12-12	12			4117
90454-12-12		12	414DA-12N	4117

## MS PIN & SOCKET CONTACTS

MS Contact	Size		Die Assembly P/N	Locator
	Pin	Socket		
<b>SIZE 12</b>				
3162-12-12	12			4117
3163-12-12		12		4117
3192-12A	12			4117
3193-12A		12		4117
39029/4-12-12	12			4117
39029/50-12-12		12		4117
83723/33B12	12			4117
83723/23B12		12	414DA-12N	4117
83723/33/12	12			4117
83723/34-12		12		4117
83723/33/12	12			4117-1
83723/34-12		12		4117-1
27490-12		12		4355-4
27655-12		12		4355-4
27491-12		12		4355-4
<b>SIZE 8</b>				
90453-8 8	8			4046A
904540808		8		4046A
3162-8-8	8			4046A
3163-8-8		8	414DA-8N	4046A
83723/30T8		8		4046A
83723/29T8	8			4046A
39029/29-8-8	8			4046A
39029/30-8-8		8		4046A
<b>SIZE 6</b>				
90559-11	6			
90559-12	6N			
90559-14	6G		414DA-6N	4297-6
90560-7		6		4297-6

## MS PIN & SOCKET CONTACTS

MS Contact	Size		Die Assembly P/N	Locator
	Pin	Socket		
<b>SIZE 6</b>				
90560-8		6G	414DA-6N	4297-6
<b>SIZE 4</b>				
90453-4-4	4			4112
90454-4-4		4		4112
3162-4-4	4			4112
3163-4-4		4		4112
83723/30T4		4		4112
83723/29T4	4		414DA-4N	4112
90559-8	4			4297-5
90559-9	4N			4297-5
90559-13	4G			4297-5
90560-5		4		4297-5
90560-9		4G		4297-5
39029/29-4-4	4			4112
39029/30-4-4		4		4112
<b>SIZE 0</b>				
90453-0-0	0			4066
90454-0-0		0		4066
3162-0-0	0			4066
3163-0-0		0		4066
83723/30T0		0		4066
83723/29T0	0		414DA-0N	4066
39029/29-0-0	0			4066
39029/30-0-0		0		4066
90559-5	1/0			4297-3
90559 6	1/0N			4297-3
90560-3		1/0		4297-3

---

**MS PIN & SOCKET CONTACTS**

MS Contact	Size		Die Assembly P/N	Locator
	Pin	Socket		
<b>SIZE 2/O</b>				
90559-3	2/0		414DA-2/0N	4297-2
90559-4	2/ON			4297-2
90560-2		2/0		4297-2
<b>SIZE 4/O</b>				
90559-1	4/0		414DA-4/0N-1	4297-1
90559-2	4/ON		""	4297-1

<b>CONTACT #</b>	<b>MANUFACTURE</b>	<b>LOCATOR</b>	<b>DIE</b>
27913	VEAM	4332	414DA-16N
27915	VEAM	4329	414DA-8N
27916	VEAM	4043	414DA-4N
27917	VEAM	4042-1	414DA-0N
27935	VEAM	4329	414DA-8N
27936	VEAM	4043	414DA-4N
27937	VEAM	4042	414DA-0N
27963	VEAM	4333	414DA-16N
33332	FLIGHT CONNECTOR	4066-1	414DA-4N
33453	FLIGHT CONNECTOR	4066-2	414DA-8N
000-0006	FLIGHT CONNECTOR	4066	414DA-0N
018-0000-059	VIKING	4276	414DA-4N
018-0000-060	VIKING	4277	414DA-0N
018-0000-068	VIKING	4275	414DA-8N
018-0468-000	VIKING	4249	414DA-10N
018-0468-001	VIKING	4253	414DA-8N
018-0468-002	VIKING	4253	414DA-8N
019-0222-000	VIKING	4236	414DA-(SPEC.)*
*SPECIAL DIE			
020-0068-002	VIKING	4237	414DA-4N
030-0686-000	CANNON	4081A	414DA-0N
030-1130-000	CANNON	4060	414DA-8N
030-1134-001	CANNON	4308	414DA-12N
030-1135-000	CANNON	4060	414DA-8N
030-1459-000	CANNON	4305	414DA-0N
030-1462-000	CANNON	4304	414DA-4N
030-1462-009	CANNON	4304	414DA-4N
030-1734-000	CANNON	4069	414DA-0N
030-1735-000	CANNON	4069	414DA-0N
030-1879-009	CANNON	4117	414DA-12N
030-1879-009	CANNON	4117	414DA-12N
030-1879-010	CANNON	4117	414DA-12N
030-1879-010	CANNON	4117	414DA-12N
030-1908-000	CANNON	4046	414DA-8N
030-1908-001	CANNON	4046	414DA-8N
030-2049-000	CANNON	4112	414DA-4N
030-2049-000	CANNON	4112	414DA-4N
030-2054-000	CANNON	4046	414DA-8N

<b>CONTACT #</b>	<b>MANUFACTURE</b>	<b>LOCATOR</b>	<b>DIE</b>
030-2244-001	CANNON	4349	414DA-8N
030-2244-002	CANNON	4349	414DA-8N
030-2245-001	CANNON	4351	414DA-4N
030-2245-002	CANNON	4351	414DA-4N
030-2271-001	CANNON	4345	414DA-16N
030-2272-001	CANNON	4347	414DA-12N
030-2275-001	CANNON	4350	414DA-8N
030-2276-001	CANNON	4352	414DA-4N
030-2277-001	CANNON	4346	414DA-16N
030-2278-001	CANNON	4348	414DA-12N
030-3199-001	CANNON	4112	414DA-4N
030-3199-001	CANNON	4112	414DA-4N
030-3200-000P	CANNON	4066	414DA-0N
030-3200-006	CANNON	4066	414DA-0N
030-8011-747	CANNON	4066	414DA-0N
030-8012-747	CANNON	4066	414DA-0N
030-8556-000	CANNON	4333	414DA-16N
030-8587-000	CANNON	4332	414DA-16N
030-8590-000 PIN	CANNON	4379	414DA-8N
030-8612-000 PIN	CANNON	4378	414DA-8N
030-8613-000	CANNON	4377	414DA-4N
030-8614-000 PIN	CANNON	4376	414DA-0N
030-9048-009	CANNON	4117	414DA-12N
030-9049-000 (P)	CANNON	4046A	414DA-8N
030-9050-002	CANNON	4112	414DA-4N
030-9050-002	CANNON	4112	414DA-4N
030-9051-000	CANNON	4066	414DA-0N
030-9201-000	CANNON	4046	414DA-8N
030-9201-003	CANNON	4046	414DA-8N
030-9202-003	CANNON	4046	414DA-8N
031-0300-000	CANNON	4080	414DA-8N
031-0317-000	CANNON	4081B	414DA-0N
031-0500-000	CANNON	4046	414DA-8N
031-0501-000	CANNON	4047	414DA-4N
031-0501-000	CANNON	4047	414DA-4N
031-0502-000	CANNON	4012	414DA-0N
031-0554-061	CANNON	4333-3	414DA-16N

<b>CONTACT #</b>	<b>MANUFACTURE</b>	<b>LOCATOR</b>	<b>DIE</b>
031-0560-001	CANNON	4069	414DA-0N
031-0560-041	CANNON	4070	414DA-4N
031-0560-081	CANNON	4001	414DA-8N
031-0560-121	CANNON	4084	414DA-12N
031-0560-161	CANNON	4332-2	414DA-16N
031-0732-001	CANNON	4318	414DA-2N
031-0975-001	CANNON	4069	414DA-0N
031-0975-001	CANNON	4069	414DA-2N-0-2
031-1005-000	CANNON	4315	414DA-12N
031-1141-001	CANNON	4046	414DA-8N
031-1149-000	CANNON	4046	414DA-8N
031-1151-000	CANNON	4112	414DA-4N
031-1151-000	CANNON	4112	414Da-4N
031-1154-000	CANNON	4046	414DA-8N
031-1293-000	CANNON	4301-4S	414DA-4N
031-1294-001	CANNON	4352	414DA-4N
031-1295-000	CANNON	4301-4S	414DA-4N
031-1295-001	CANNON	4352	414DA-4N
031-1298-001	CANNON	4350	414DA-8N
031-1299-001	CANNON	4350	414DA-8N
031-1300-001	CANNON	4348	414DA-12N
031-1460-000	CANNON	4305	414DA-0N
031-1460-009	CANNON	4305	414DA-0N
031-1735-000	CANNON	4069	414DA-0N
031-1735-001	CANNON	4069	414DA-2N-0-2
031-3097-001	CANNON	4112	414DA-4N
031-3097-001	CANNON	4112	414DA-4N
031-3116-001	CANNON	4046A	414DA-8N
031-3117-001	CANNON	4112	414DA-4N
031-3117-001	CANNON	4112	414DA-4N
031-3118-001S	CANNON	4066	414DA-0N
031-3118-006	CANNON	4066	414DA-0N
031-3300-000	CANNON	4046B	414DA-8N
031-5521-000 SOCKET	CANNON	4376	414DA-0N
031-6342-000	CANNON	4066-4	414DA-8N
031-6343-000	CANNON	4066-4	414DA-8N
031-8447-000	CANNON	4321	414DA-12N

<b>CONTACT #</b>	<b>MANUFACTURE</b>	<b>LOCATOR</b>	<b>DIE</b>
031-8519-000 SOCKET	CANNON	4378	414DA-8N*
031-8520-000	CANNON	4377	414DA-4N*
031-8555-000	CANNON	4333-3	414DA-16N*
031-8559-000 SOCKET	CANNON	4378	414DA-8N*
031-9044-000 (S)	CANNON	4046A	414DA-8N*
031-9069-001	CANNON	4072	414DA-8N*
031-9119-000	CANNON	4073	414DA-8N*
031-9120-000	CANNON	4073	414DA-4N*
031-9121-000	CANNON	4071	414DA-16N*
031-9122-000	CANNON	4071	414DA-12N*
031-9193-000	CANNON	4066	414DA-0N*
042-0013-104	FLIGHT CONNECTOR	SEE MODEL 500 CATALOG	
042-1013-204	FLIGHT CONNECTOR	SEE MODEL 500 CATALOG	
0460-201-1690	DEUTSCH	4301-16S	414DA-16N-048
0460-202-16141	DEUTSCH	4301-16S	414DA-16N-048
0460-202-1631	DEUTSCH	4301-16S	414DA-16N-048
0460-202-20141	DEUTSCH	4301-20S	414DA-20N
0460-204-08141	DEUTSCH	4301-8S	414DA-8SPEC.
0460-215-16141	DEUTSCH	4301-16S	414DA-16N-048
0460-247-16141	DEUTSCH	4301-16S	414DA-16N-048
0460-247-16141	DEUTSCH	4301-16S	414DA-16N-048
0461-201-1690	DEUTSCH	4301-16S	414DA-16N-048
0462-201-16141	DEUTSCH	4301-16S	414DA-16N-048
0462-201-1631	DEUTSCH	4301-16S	414DA-16N-048
0462-201-20141	DEUTSCH	4301-20S	414DA-20N
0462-203-08141	DEUTSCH	4301-8S	414DA-8SPEC.
0462-203-12141	DEUTSCH	4301-12S	414DA-12N
0462-204-12141	DEUTSCH	4301-12S	414DA-12N
0462-209-16141	DEUTSCH	4301-16S	414DA-16N-048
100-4090-1613	AMPHENOL	4235	414DA-8-4235*
100-4090-1614	AMPHENOL	4235	414DA-8-4235*
10-113239-12P	BENDIX	4231	414DA-12N
10-113239-12S	BENDIX	4232	414DA-12N
10-113239-15P	BENDIX	4314-2	414DA-16N
10-113239-15S	BENDIX	4314-1	414DA-16N
10-113239-16P	BENDIX	4314-4	414DA-16N
10-113239-16S	BENDIX	4314-3	414DA-16N

<b>CONTACT #</b>	<b>MANUFACTURE</b>	<b>LOCATOR</b>	<b>DIE</b>
10-113239-4P	BENDIX	4043	414DA-4N
10-113239-4S	BENDIX	4043	414DA-4N
10-113239-8P	BENDIX	4296	414DA-8N
10-113239-8S	BENDIX	4295	414DA-8N
10-113474-15P	BENDIX	4314-2	414DA-16N
10-113474-15S	BENDIX	4314-1	414DA-16N
10-113474-16P	BENDIX	4314-4	414DA-16N
10-113474-16S	BENDIX	4314-3	414DA-16N
10-113474-45	BENDIX	4043	414DA-4N
10-189000-202	BENDIX	4200	414DA-20N
10-189002-162	BENDIX	4200A	414DA-16N
10-189002-202	BENDIX	4200	414DA-20N
10-189004-162	BENDIX	4200A	414DA-16N
10-229192-86	BENDIX	4263	414DA-8N
10-229193-86	BENDIX	4263	414DA-8N
10-305126-121/-123	BENDIX	4226	414DA-12N
10-305126-13	BENDIX	4021	414DA-0N
10-305126-151	BENDIX	4334-1	414DA-16N
10-305126-153	BENDIX	4334-1	414DA-16N
10-305126-161	BENDIX	4334-3	414DA-16N
10-305126-163	BENDIX	4334-3	414DA-16N
10-305126-43	BENDIX	4017	414DA-4N
10-305126-83	BENDIX	4018	414DA-8N
10-305127-121/-123	BENDIX	4226-1	414DA-12N
10-305127-13	BENDIX	4021	414DA-0N
10-305127-151	BENDIX	4334-2	414DA-16N
10-305127-153	BENDIX	4334-2	414DA 16N
10-305127-161	BENDIX	4334-4	414DA-16N
10-305127-163	BENDIX	4334-4	414DA-16N
10-305127-83	BENDIX	4018	414DA-8N
10-313076-11	BENDIX	4020	414DA-0N
10-313076-41	BENDIX	4019	414DA-4N
10-313077-11	BENDIX	4020	414DA-0N
10-313077-41	BENDIX	4019	414DA-4N
10-313077-81	BENDIX	4016	414DA-8N
10-40552	BENDIX	4314-1	414DA-16N
10-40553	BENDIX	4314-2	414DA-16N

<b>CONTACT #</b>	<b>MANUFACTURE</b>	<b>LOCATOR</b>	<b>DIE</b>
10-40556	BENDIX	4314-3	414DA-16N
10-40557	BENDIX	4314-4	414DA-16N
10-40560	BENDIX	4232	414DA-12N
10-40561	BENDIX	4231	414DA 12N
10-40562	BENDIX	4042	414DA-0N
10-40563	BENDIX	4042	414DA-0N
10-40564	BENDIX	4043	414DA-4N
10-40565	BENDIX	4043	414DA-4N
10-40792	BENDIX	4025	414DA-8N
10-40793	BENDIX	4026	414DA-8N
10-40794	BENDIX	4121	414DA-10N
10-40795	BENDIX	4121	414DA-10N
10-74665	BENDIX	4356	414DA-8N
10-74666	BENDIX	4357	414DA-8N
10-74696-11	BENDIX	4019	414DA-2N
112347-P	DEUTSCH	4301-4S	414DA-4SPEC.
112348-P	DEUTSCH	4301-8S	414DA-8SPEC.
112349-P	DEUTSCH	4301-12S	414DA-12N
112350-S	DEUTSCH	4301-4S	414DA-4SPEC.
112351-S	DEUTSCH	4301-8S	414DA-8SPEC.
112352-S	DEUTSCH	4301-12S	414DA-12N
115-197-2 (P)	AMPHENOL	4024	414DA-8N
115-197-2 (S)	AMPHENOL	4023	414DA-8N
1841-5-5608	DEUTSCH	4342	414DA-8SPEC.
195-2N16-12BC	CANNON	4083	414DA-12N*
1952N16-12PC-B02	CANNON	4083E	414DA-12N*
195-2N16-12SC	CANNON	4083	414DA-12N*
1952N16-12SC-B02	CANNON	4083F	414DA-12N*
1953N16-8PC-B02	CANNON	4085C	414DA-8N*
1957N16-0PC-B02	CANNON	4087E	414DA-0N*
1957N16-4PC-B02	CANNON	4087F	414DA-4N*
1957N16-4SC-B02	CANNON	4087F	414DA-4N*
200-1003-500	AMPHENOL	4267	414DA-8N
200-368-30A	AMPHENOL	4040	414DA-12-104
200-503-141	AMPHENOL	4053	414DA-8N
200-503-142	AMPHENOL	4050	414DA-8N
200-503-143	AMPHENOL	4034	414DA-4N*

<b>CONTACT #</b>	<b>MANUFACTURE</b>	<b>LOCATOR</b>	<b>DIE</b>
200-503-144	AMPHENOL	4034	414DA-2N
200-503-204	AMPHENOL	4209	414DA-12-104
200-503-205	AMPHENOL	4209	414DA-12-104
200-503-206	AMPHENOL	4207	414DA-16-103
200-503-207	AMPHENOL	4207	414DA-16-103
200-503-210	AMPHENOL	4208	414DA-16-103
200-503-211	AMPHENOL	4208	414DA-16-103
200-503-212	AMPHENOL	4212	414DA-8N
200-503-213	AMPHENOL	4212	414DA-8N
200-503-214	AMPHENOL	4210	414DA-16-103
200-503-215	AMPHENOL	4210	414DA-16-103
200-503-216	AMPHENOL	4211	414DA-12-104
200-503-217	AMPHENOL	4211	414DA-12-104
200-503-218	AMPHENOL	4205	414DA-8N
200-503-219	AMPHENOL	4205	414DA-8N
200-503-220	AMPHENOL	4005	414DA-4N
200-503-221	AMPHENOL	4005	414DA-4N
200-503-227	AMPHENOL	4206	414DA-20-103
200-503-228	AMPHENOL	4206	414DA-20-103
200-557-202	AMPHENOL	4060	414DA-8N
200-738-214	AMPHENOL	4061	414DA-8N
200X-142	AMPHENOL	4034	414DA-4N
200X-142 (P)	AMPHENOL	4031	414DA-8N
200X-153-205	AMPHENOL	4057	414DA-0N
200X-153-215	AMPHENOL	4064	414DA-2N
200X-153-406	AMPHENOL	4056	414DA-0N
200X-153-407	AMPHENOL	4054	414DA-8N
200X-153-409	AMPHENOL	4075	414DA-8N
200X-153-410	AMPHENOL	4055	414DA-4N
200X-153-604	AMPHENOL	4054	414DA-8N
200X-153-605	AMPHENOL	4076	414DA-8N
200X-230-30	AMPHENOL	4044	414DA-12-104
200X-230-5106	AMPHENOL	4051	414DA-6N
200X-230-52	AMPHENOL	4051	414DA-6N
200X-230-5205	AMPHENOL	4051	414DA-6N
200X-230-64	AMPHENOL	4014	414DA-6N
200X-242-507	AMPHENOL	4033	414DA-8N

<b>CONTACT #</b>	<b>MANUFACTURE</b>	<b>LOCATOR</b>	<b>DIE</b>
200X-242-507	AMPHENOL	4058	414DA-8N
200X-242-544	AMPHENOL	4035	414DA-16-103
200X-242-545	AMPHENOL	4030	414DA-12-104
200X-242-764	AMPHENOL	4059	414DA-8N
200X-368-10	AMPHENOL	4013	414DA-8N
200X-368-19	AMPHENOL	4098	414DA-8N
200X-368-34	AMPHENOL	4041	414DA-12-104
200X-368-501	AMPHENOL	4074	414DA-8N
200X-368-68	AMPHENOL	4045	414DA-12N
200X-368-7	AMPHENOL	4077	414DA-8N
200X-368-78	AMPHENOL	4035	414DA-6N
200X-368-8	AMPHENOL	4078	414DA-16N
200X-368-82	AMPHENOL	4015	414DA-6N
200X-375-118	AMPHENOL	4062	414DA-8N
200X-375-60	AMPHENOL	4099	414DA-16-103
200X-46-2040	AMPHENOL	4068	414DA-8N
200X-46-2041	AMPHENOL	4067	414DA-8N
200X-46-2042	AMPHENOL	4065	414DA-2N
200X-46-2043	AMPHENOL	4066	414DA-2N
200X-542	AMPHENOL	4032	414DA-8N
200X-542	AMPHENOL	4032	414DA-6N
200X-738-133	AMPHENOL	4048	414DA-8N*
203-10-100	AMPHENOL	4261	414DA-4N*
203-10-102	AMPHENOL	4261	414DA-4N*
203-10132	AMPHENOL	4268	414DA-8N
2032N16-12PC-B04	CANNON	4083C	414DA-12N*
2032N16-12SC-B04	CANNON	4083D	414DA-12N
2033N16-12PC-B04	CANNON	4085A	414DA-12N
2033N16-12SC-B04	CANNON	4085B	414DA-12N
2033N16-8PC-B04	CANNON	4085D	414DA-8N
2033N16-8SC-B04	CANNON	4085E	414DA-8N
2037N16-0PC-B04	CANNON	4087C	414DA-0N
2037N16-0SC-B04	CANNON	4087D	414DA-0N
205-0001-000	VIKING	4248	414DA-4N
205-0002-000	VIKING	4247	414DA-2N
205-0003-000	VIKING	4246	414DA-0N
205-0004-000	VIKING	4245	414DA-2/0N

<b>CONTACT #</b>	<b>MANUFACTURE</b>	<b>LOCATOR</b>	<b>DIE</b>
205-0004-000	VIKING	4245	414DA-2/0N
205-10438-10	AMPHENOL	4290	414DA-0N
206-0116-000	VIKING	4258	414DA-4N
208-0110-000	VIKING	4257	414DA-0N
208-0132-000	VIKING	4259	414DA-8N
2102N16-12PC-B02	CANNON	4083A	414DA-12N
2102N16-12SC-B02	CANNON	4083B	414DA-12N
2104N16-4PC-B02	CANNON	4086A	414DA-4N
2104N16-4SC-B02	CANNON	4086B	414DA-4N
2107N16-0PC-B02	CANNON	4087A	414DA-0N
2107N16-0SC-B02	CANNON	4087B	414DA-0N
246-11700-0800-02	AMPHENOL	4066-2	414DA-8N
246-11700-0800-02	AMPHENOL	4046A	414DA-8N
258-065	VEAM	4102	414DA-12N
258-7305	VEAM	4101	414DA-8N
270-101-08000-02	AMPHENOL	4260	414DA-8*
27914-26	VEAM	4330	414DA-12N
27964-26	VEAM	4331	414DA-12N
280-33013-12S	BENDIX	4117-3	414DA-12N
330-0189-000	CANNON	4046	414DA-8N
330-0189-000	CANNON	4079A	414DA-8N
330-0190-000	CANNON	4047	414DA-4N
330-0191-000	CANNON	4012	414DA-0N
330-0195-000	CANNON	4046	414DA-8N
330-0196-000	CANNON	4047	414DA-4N
330-0197-000	CANNON	4012	414DA-0N
330-0351-000	CANNON	4069	414DA-0N
330-0351-004	CANNON	4070	414DA-4N
330-0351-008	CANNON	4001	414DA-8N
330-0351-012	CANNON	4084	414DA-12N
330-0351-016	CANNON	4332-4	414DA-16N
4060-001-16141	DEUTSCH	4345	414DA-16N-048
4060-002-12141	DEUTSCH	4347	414DA-12N
4060-003-08141	DEUTSCH	4349	414DA-8N
4060-004-08141	DEUTSCH	4349	414DA-8N
4060-005-04141	DEUTSCH	4351	414DA-4N
4060-006-04141	DEUTSCH	4351	414DA-4N

<b>CONTACT #</b>	<b>MANUFACTURE</b>	<b>LOCATOR</b>	<b>DIE</b>
4062-001-16141	DEUTSCH	4346	414DA-16N-048
4062-002-12141	DEUTSCH	4348	414DA-12N
4062-003-08141	DEUTSCH	4350	414DA-8N
4062-004-08141	DEUTSCH	4350	414DA-8N
4062-005-04141	DEUTSCH	4352	414DA-4N
4062-006-04141	DEUTSCH	4352	414DA-4N
448-6005	VEAM	4100	414DA-6N
5000-027-08P	VEAM	4283	414DA-8-4260
647-714P	G & H TECHNOLOGY	4079	414DA-0N
647-718-1 (P)	G & H TECHNOLOGY	4095A	414DA-16N
647-718-2 (P)	G & H TECHNOLOGY	4095A	414DA-16N
647-811S	G & H TECHNOLOGY	4079	414DA-0N
647-815-1 (S)	G & H TECHNOLOGY	4095B	414DA-16N
647-815-2 (S)	G & H TECHNOLOGY	4095B	414DA-16N
650-308	G & H TECHNOLOGY	4229	414DA-4N
650-411	G & H TECHNOLOGY	4230	414DA-4N
69-1140-79	AMPHENOL	4215	414DA-4N
69-1140-94	AMPHENOL	4216	414DA-0N
706-12	G & H TECHNOLOGY	4094	414DA-12N
706-16	G & H TECHNOLOGY	4095A	414DA-16N
706-8	G & H TECHNOLOGY	4093	414DA-12N
817-133P	G & H TECHNOLOGY	4282	414DA-4N
817-230S	G & H TECHNOLOGY	4282	414DA-4N
82-107222-22S	BENDIX	4018	414DA-8N
82-107624-22P	BENDIX	4018	414DA-8N
882-216-001	G & H TECHNOLOGY	4354	414DA-8N
CA3106KE22-22P	CANNON	4027	414DA-8N
CA3106KE22-22S	CANNON	4028	414DA-8N
CBT-600	CANNON	POWER UNIT	400
CBT-600B	CANNON	POWER UNIT	400-B
CCH-0-1	CANNON	DIE ASSY	414DA-0N
CCH-10-1	CANNON	DIE ASSY	414DA-10N
CCH-12-7	CANNON	DIE ASSY	414DA-12N
CCH-4-1	CANNON	DIE ASSY	414DA-4N
CCH-6-1	CANNON	DIE ASSY	414DA-6N
CCH-8-1	CANNON	DIE ASSY	414DA-8N
CCHP-0-6	CANNON	LOCATOR	4012

<b>CONTACT #</b>	<b>MANUFACTURE</b>	<b>LOCATOR</b>	<b>DIE</b>
CCHP-0-7	CANNON	LOCATOR	4069
CCHP-0-8	CANNON	LOCATOR	4066
CCHP-0-9	CANNON	LOCATOR	4233
CCHP-12	CANNON	LOCATOR	4084
CCHP-12-2	CANNON	LOCATOR	4479
CCHP-12-3	CANNON	LOCATOR	4368
CCHP-12P-VE	CANNON	LOCATOR	4347
CCHP-12S-VE	CANNON	LOCATOR	4348
CCHP-16-1	CANNON	LOCATOR	4370
CCHP-16-2	CANNON	LOCATOR	4371
CCHP-4	CANNON	LOCATOR	4047
CCHP-4-1	CANNON	LOCATOR	4070
CCHP-4-7	CANNON	LOCATOR	4120
CCHP-4-8	CANNON	LOCATQR	4112
CCHP-4-9	CANNON	LOCATOR	4234
CCHP-4P-VE	CANNON	LOCATOR	4351
CCHP-4S-VE	CANNON	LOCATOR	4352
CCHP-8	CANNON	LOCATOR	4046
CCHP-8-1	CANNON	LOCATOR	4001
CCHP-8-6	CANNON	LOCATOR	4046A
CCHP-8-7	CANNON	LOCATOR	4060
CCHP-8P-VE	CANNON	LOCATOR	4349
CCHP-8S-VE	CANNON	LOCATOR	4350
D-101-1100	VIKING	4109	414DA-4N
D-101-1200	VIKING	4110	414DA-8N
D-101-1300	VIKING	4122	414DA-16N
D-102-1300	VIKING	4123	414DA-16N
D-105-1100	VIKING	4111	414DA-8N
D-107-1100	VIKING	4114	414DA-4N
DPSM-12-P	CANNON	4009	414DA-12N
DPSM-4-P	CANNON	4011	414DA-4N
DPSM-8-P	CANNON	4010	414DA-8N
No. 8 PIN	G & H TECHNOLOGY	4090	414DA-8N
No. 8 SOCKET	G & H TECHNOLOGY	4090	414DA-8N
P201609PN2	PYLE-NATIONAL	4156-2	414DA-1/0PN
R0808PC BOL P	CANNON	4306	414DA-8N
R0808SC BOL S	CANNON	4306	414DA-8N

<b>CONTACT #</b>	<b>MANUFACTURE</b>	<b>LOCATOR</b>	<b>DIE</b>
S-0808PH-D08	CANNON	4046A	414DA-8N
S-0808SH-B33 (S)	CANNON	4046A	414DA-8N
S-0808SH-D31	CANNON	4046A	414DA-8N
S-1212PH-B08	CANNON	4038	414DA-12N
S-1212SH-B31	CANNON	4039	414DA-12N
SN-48 (S)	AMPHENOL	4052	414DA-8N*
ZZM~4141-76	PYLE-NATIONAL	4160	414DA-4/0N
ZZM-4000-36L	PYLE-NATIONAL	4007-A	414DA-1/0 PN
ZZM-4000-50; 52; 54	PYLE-NATIONAL	4006-3	414DA-1/0 PN
ZZM-4000-50B; 52B; 54B	PYLE-NATIONAL	4006-3	414DA-1/0 PN
ZZM-4000-50L	PYLE-NATIONAL	4006-3	4140A-1/0 PN
ZZM-4000-50LB	PYLE-NATIONAL	4006-3	414DA-1/0 PN
ZZM-4000-66B; 75B	PYLE-NATIONAL	4158	414DA-1/0 PN
ZZM-4000-66LB	PYLE-NATIONAL	4007-B	414DA-1/0 PN
ZZM-4002-36	PYLE-NATIONAL	4063	414DA-2 PN
ZZM-4004-36	PYLE-NATIONAL	4005	414DA-4N
ZZM-4004-50; 52; 54	PYLE-NATIONAL	4005-3	414DA-4N
ZZM-4004-50B; 52B; 54B	PYLE-NATIONAL	4005-3	414DA-4N
ZZM-4004-50L	PYLE-NATIONAL	4005-3	414DA-4N
ZZM-4004-50LB	PYLE-NATIONAL	4005-3	414DA-4N
ZZM-4004-66; 75	PYLE-NATIONAL	4156	414DA-4N
ZZM-4004-66B	PYLE-NATIONAL	4157	414DA-4N
ZZM-4008-36LKB	PYLE-NATIONAL	4004	414DA-8N
ZZM-4008-36LR	PYLE-NATIONAL	4004	414DA-8N
ZZM-4008-50; 52; 54	PYLE-NATIONAL	4004-3	414DA-8N
ZZM-4008-50B; 52B; 54B	PYLE-NATIONAL	4004-3	414DA-8N
ZZM-4008-50L	PYLE-NATIONAL	4004-3	414DA-8N
ZZM-4008-50LB	PYLE-NATIONAL	4004-3	414DA-8N
ZZM-4008-66	PYLE-NATIONAL	4154	414DA-8N
ZZM-4008-66B	PYLE-NATIONAL	4155	414DA-8N
ZZM-4010-36	PYLE-NATIONAL	4152	414DA-10N
ZZM-4010-36B	PYLE-NATIONAL	4153	414DA-10N
ZZM-4010-36LK	PYLE-NATIONAL	4003	414DA-10N
ZZM-4010-50; 52; 54	PYLE-NATIONAL	4003-3	414DA-10N
ZZM-4010-50B; 52B; 54B	PYLE-NATIONAL	4003-3	414DA-10N
ZZM-4010-50L	PYLE-NATIONAL	4004-3	414DA-10N
ZZM-4010-50LB	PYLE-NATIONAL	4004-3	414DA-10N

<b>CONTACT #</b>	<b>MANUFACTURE</b>	<b>LOCATOR</b>	<b>DIE</b>
ZZM-4011-36	PYLE-NATIONAL	4150	414DA-12N
ZZM-4012-36; 37	PYLE-NATIONAL	4150	414DA-12N
ZZM-4012-36B; 37B	PYLE-NATIONAL	4151	414DA-12N
ZZM-4012-36LK	PYLE-NATIONAL	4002	414DA-12N
ZZM-4012-50; 52; 54;	PYLE-NATIONAL	4002-3	414DA-12N
ZZM-4012-50B; 52B; 54B	PYLE-NATIONAL	4002-3	414DA-12N
ZZM-4041-50; 52; 54	PYLE-NATIONAL	4008-3	414DA-4/0N
ZZM-4041-50B; 52B; 54B	PYLE-NATIONAL	4008-3	414DA-4/0N
ZZM-4041-50L	PYLE-NATIONAL	4008-3	414DA-4/0 PN
ZZM-4041-50LB	PYLE-NATIONAL	4008-3	414DA-4/0 PN
ZZM-4041-75B; 76B	PYLE-NATIONAL	4160	414DA-4/0N
ZZM-4100-36L	PYLE-NATIONAL	4006-A	414DA-0N
ZZM-4100-36L	PYLE-NATIONAL	4006-B	414DA-1/0 PN
ZZM-4100-50	PYLE-NATIONAL	4006-3	414DA-1/0 PN
ZZM-4100-50L	PYLE-NATIONAL	4006-3	414DA-1/0 PN
ZZM-4100-66	PYLE-NATIONAL	4158	414DA-1/0PN
ZZM-4100-66	PYLE-NATIONAL	4158	414DA-1/0 PN
ZZM-4102-36	PYLE-NATIONAL	4063-A	414DA-2 PN
ZZM-4104-36	PYLE-NATIONAL	4005-A	414DA-4N
ZZM-4104-50	PYLE-NATIONAL	4005-3	414DA-4N
ZZM-4104-50L	PYLE-NATIONAL	4005-3	414DA-4N
ZZM-4104-66	PYLE-NATIONAL	4157	414DA-4N
ZZM-4104-66	PYLE-NATIONAL	4156	414DA-4N
ZZM-4106-66	PYLE-NATIONAL	4126	414DA-6
ZZM-4108-36L	PYLE-NATIONAL	4004-A	414DA-8N
ZZM-4108-50	PYLE-NATIONAL	4004-3	414DA-8N
ZZM-4108-50L	PYLE-NATIONAL	4004-3	414DA-8N
ZZM-4108-66	PYLE-NATIONAL	4155	414DA-8N
ZZM-4108-66	PYLE-NATIONAL	4154	414DA-8N
ZZM-4108-66LK	PYLE-NATIONAL	4004-B	414DA-8N
ZZM-4110-36	PYLE-NATIONAL	4152	414DA-10N
ZZM-4110-36	PYLE-NATIONAL	4153	414DA-10N
ZZM-4110-36	PYLE-NATIONAL	4152	414DA-10N
ZZM-4110-36L	PYLE-NATIONAL	4003-A	414DA-10N
ZZM-4110-50	PYLE-NATIONAL	4003-3	414DA-10N
ZZM-4110-50L	PYLE-NATIONAL	4004-3	414DA-10N
ZZM-4112-36	PYLE-NATIONAL	4151	414DA-12N

<b>CONTACT #</b>	<b>MANUFACTURE</b>	<b>LOCATOR</b>	<b>DIE</b>
ZZM-4112-36	PYLE-NATIONAL	4150	414DA-12N
ZZM-4112-36LK	PYLE-NATIONAL	4002-A	414DA-12N
ZZM-4112-50	PYLE-NATIONAL	4002-3	414DA-12N
ZZM-4141-50	PYLE-NATIONAL	4008-3	414DA-4/0N
ZZM-4141-50L	PYLE-NATIONAL	4008-3	414DA-4/0 PN
ZZM-4-4000-56LB	PYLE-NATIONAL	4006-5	414DA-1/0PN
ZZM-4800-50; 50B	PYLE-NATIONAL	4006-3	414DA-1/0 PN
ZZM-4800-66B; 75B	PYLE-NATIONAL	4158	414DA-1/0 PN
ZZM-4800-75B	PYLE-NATIONAL	4158	414DA-1/0PN
ZZM-4804-50; 50B	PYLE-NATIONAL	4005-3	414DA-4N
ZZM-4804-66; 75	PYLE-NATIONAL	4156	414DA-4N
ZZM-4804-66B	PYLE-NATIONAL	4157	414DA-4N
ZZM-4804-66LK	PYLE-NATIONAL	4005	414DA-4N
ZZM-4804-68;75	PYLE-NATIONAL	4156	414DA-4N
ZZM-4808-50; 50B	PYLE-NATIONAL	4004-3	414DA-8N
ZZM-4808-66	PYLE-NATIONAL	4154	414DA-8N
ZZM-4808-66B	PYLE-NATIONAL	4155	414DA-8N
ZZM-4810-36	PYLE-NATIONAL	4152	414DA-10N
ZZM-4810-36B	PYLE-NATIONAL	4153	414DA-10N
ZZM-4810-50; 50B	PYLE-NATIONAL	4003-3	414DA-10N
ZZM-4812-36	PYLE-NATIONAL	4150	414DA-12N
ZZM-4812-36B	PYLE-NATIONAL	4151	414DA-12N
ZZM-4812-50; 50B	PYLE-NATIONAL	4002-3	414DA-12N
ZZM-4841-50; 50B	PYLE-NATIONAL	4008-3	414DA-4/0N
ZZM-4841-75B	PYLE-NATIONAL	4160	414DA-4/0PN
ZZM-4841-76B	PYLE-NATIONAL	4160	414DA-4/0PN
ZZM-4900-50	PYLE-NATIONAL	4006-3	414DA-1/0 PN
ZZM-4900-50	PYLE-NATIONAL	4006-3	414DA-1/0 PN
ZZM-4900-66	PYLE-NATIONAL	4158	414DA-1/0 PN
ZZM-4904-36	PYLE-NATIONAL	4005-AP	414DA-4N
ZZM-4904-50	PYLE-NATIONAL	4005-3	414DA-4N
ZZM-4904-66	PYLE-NATIONAL	4156	414DA-4N
ZZM-4904-66	PYLE-NATIONAL	4157	414DA-4N
ZZM-4904-66	PYLE-NATIONAL	4156	414DA-4N
ZZM-4904-66L	PYLE-NATIONAL	4005-A	414DA-4N
ZZM-4908-50	PYLE-NATIONAL	4004-3	414DA-8N
ZZM-4908-66	PYLE-NATIONAL	4155	414DA-8N

<b>CONTACT #</b>	<b>MANUFACTURE</b>	<b>LOCATOR</b>	<b>DIE</b>
ZZM-4908-66	PYLE-NATIONAL	4154	414DA-8N
ZZM-4910-36	PYLE-NATIONAL	4152	414DA-10N
ZZM-4910-36	PYLE-NATIONAL	4153	414DA-10N
ZZM-4910-36	PYLE-NATIONAL	4152	414DA-10N
ZZM-4910-50	PYLE-NATIONAL	4003-3	414DA-10N
ZZM-4912-36	PYLE-NATIONAL	4151	414DA-12N
ZZM-4912-36	PYLE-NATIONAL	4150	414DA-12N
ZZM-4912-50	PYLE-NATIONAL	4002-3	414DA-12N
ZZM-4941-50	PYLE-NATIONAL	4008-3	414DA-4/0N
ZZM-4941-76	PYLE-NATIONAL	4160	414DA-4/0N
ZZM-B-4041-76LB	PYLE-NATIONAL	4008	414DA-4/0 PN
ZZM-B-4141-76L	PYLE-NATIONAL	4008	414DA-4/0 PN
ZZM-U-4000-56LB	PYLE-NATIONAL	4006-4	414DA-1/0 PN
ZZM-V-4000-75LB	PYLE-NATIONAL	4158-1	414DA-1/0PN
ZZM-V-4100-66L	PYLE-NATIONAL	4158-1	414DA-1/0PN
ZZM-V-4800-75LKB	PYLE-NATIONAL	4158-1	414DA-1/0PN
ZZM-V-4900-66LK	PYLE-NATIONAL	4158-1	414DA-1/0PN

---

**PYLE NATIONAL TO PICO CROSS REFERENCE**

---

<b>PYLE NO.</b>		<b>PICO NO.</b>
TP-201328	<b>POWER UNIT</b>	<b>400-B</b>
TP-201328-12D	DIE ASSY	414DA-12N .068
TP-201328-10D	DIE ASSY	414DA-10N .090
TP-201328-8D	DIE ASSY	414DA-8N .134
TP-201328-4D	DIE ASSY	414DA-4N .200
TP-201328-0D	DIE ASSY	414DA-1/0PN .296
TP-201328-2D	DIE ASSY	414DA-2PN .260
TP-201328-41D	DIE ASSY	414DA-4/0PN .330
TP-201328-12	LOCATOR	4150
TP-201328-12C	LOCATOR	4151
TP-201328-10	LOCATOR	4152
TP-201328-10C	LOCATOR	4153
TP-201328-8	LOCATOR	4154
TP-201328-8C	LOCATOR	4155
TP-201328-4	LOCATOR	4156
TP-201328-4C	LOCATOR	4157
TP-201328-0C	LOCATOR	4158
TP-201328-41	LOCATOR	4160
TP-201328-12L	LOCATOR	4002-3
TP-201328-10L	LOCATOR	4003-3
TP-201328-8L	LOCATOR	4004-3
TP-201328-4L	LOCATOR	4005-3
TP-201328-0L	LOCATOR	4006-3
TP-201328-41L	LOCATOR	4008-3
TP-201328-12G	GO NO-GO GAGE	450GA-12N .068
TP-201328-10G	GO NO-GO GAGE	450GA-10N .090
TP-201328-8G	GO NO-GO GAGE	4450GA-8N .134
TP-201328-4G	GO NO-GO GAGE	450GA-4N .200
TP-201328-0G	GO NO-GO GAGE	450GA-1/0PN .296
TP-201328-2G	GO NO-GO GAGE	450GA-2PN .260
TP-201328-41G	GO NO-GO GAGE	450GA-4/0PN .330

---

## WEARNES HOLLINGSWORTH TO PICO CROSS REFERENCE

---

PICO NO.	HOLLINGSWORTH
----------	---------------

---

### POWER UNIT

400-BHD	H30
500-D	H40

### DIE ASSY.

### WITH ATTACHED LOCATOR

414DA-8NIT	5008-1	30000
414DA-6NIT	5006-1	30001
414DA-4NIT	5007	30002
414DA-2NIT	5007-1	30003
414DA-1/0NIT	5039-1	30004
414DA-2/0NIT	5039-1	30005
414DA-8IT	5008-1	30006
414DA-6IT	5006-1	30007
414DA-4IT	5007	CALL FACTORY
414DA-2IT	5007-1	30009
414DA-1/0IT-C	5039-1	30010
414DA-1/0IT-A	5039-1	30011
414DA-2/0IT-C	5039-1	30012
414DA-2/0IT-A	5039-1	30013