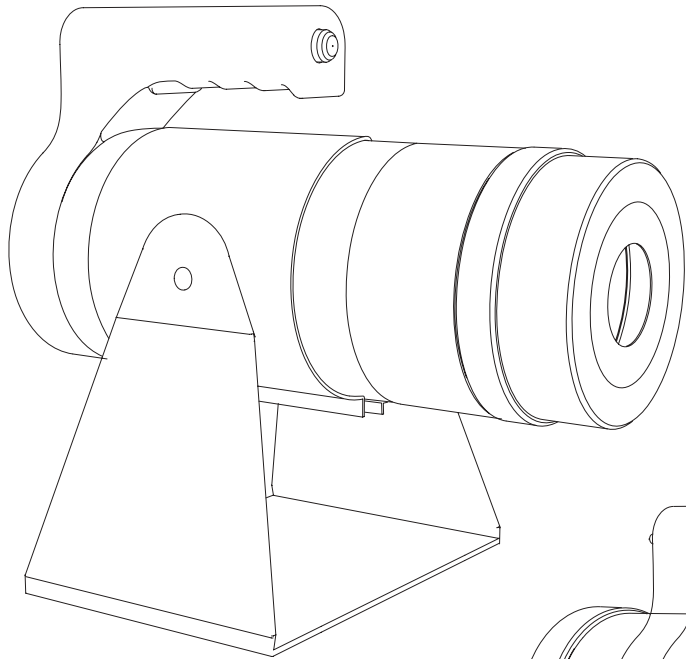
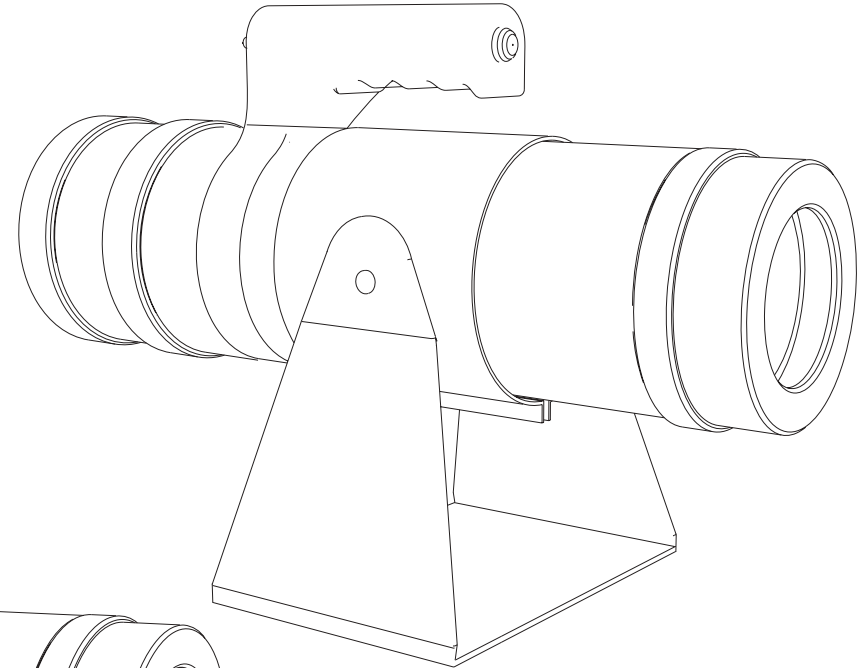


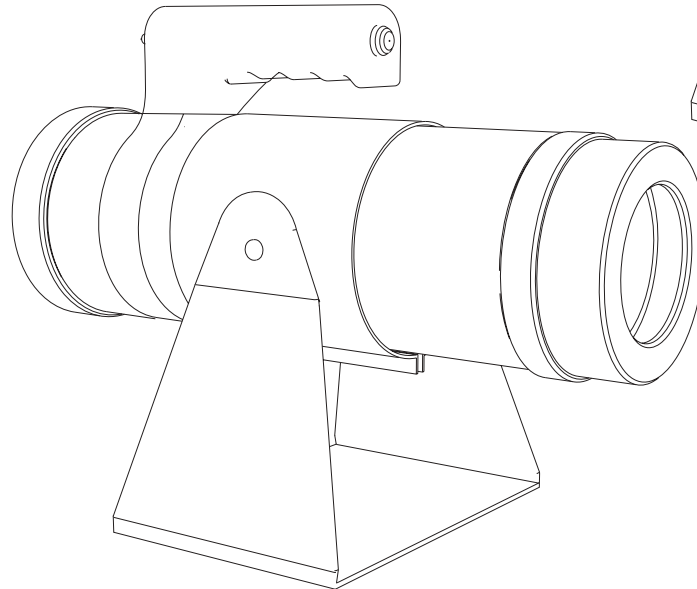
500 Series Power Unit Parts List



Model 500

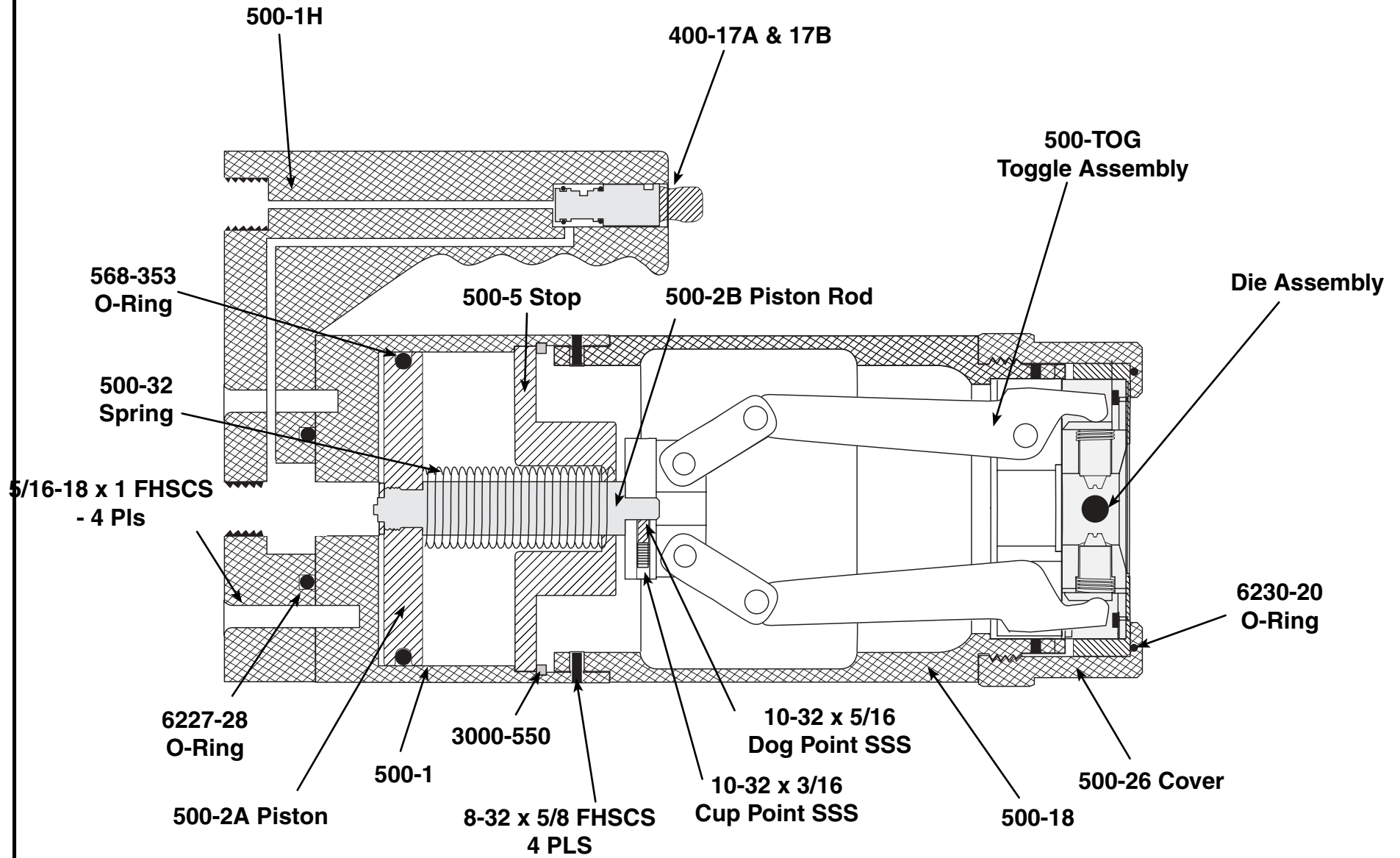


Model 400-D-1

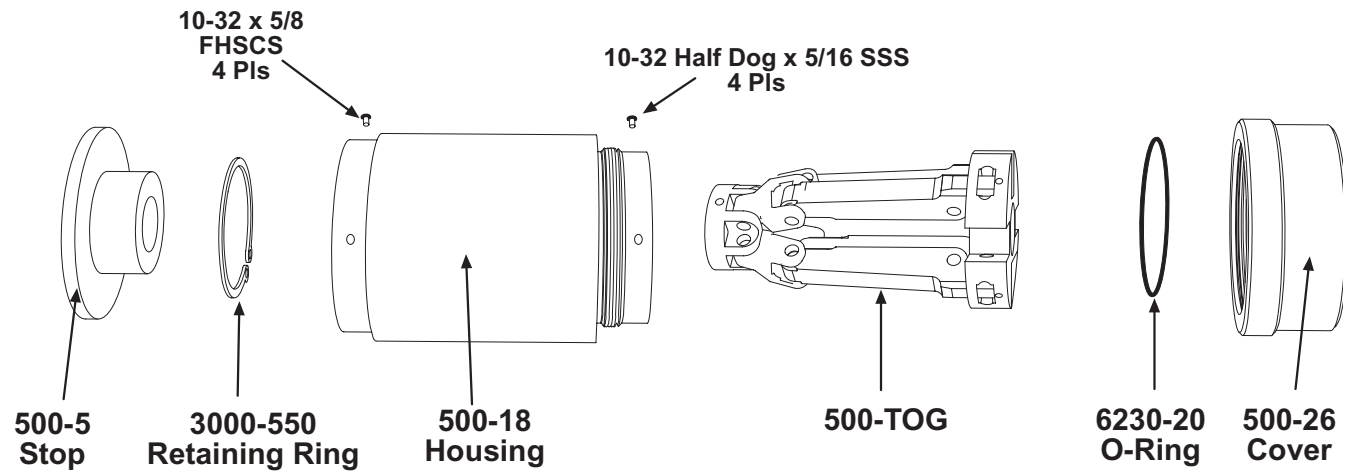
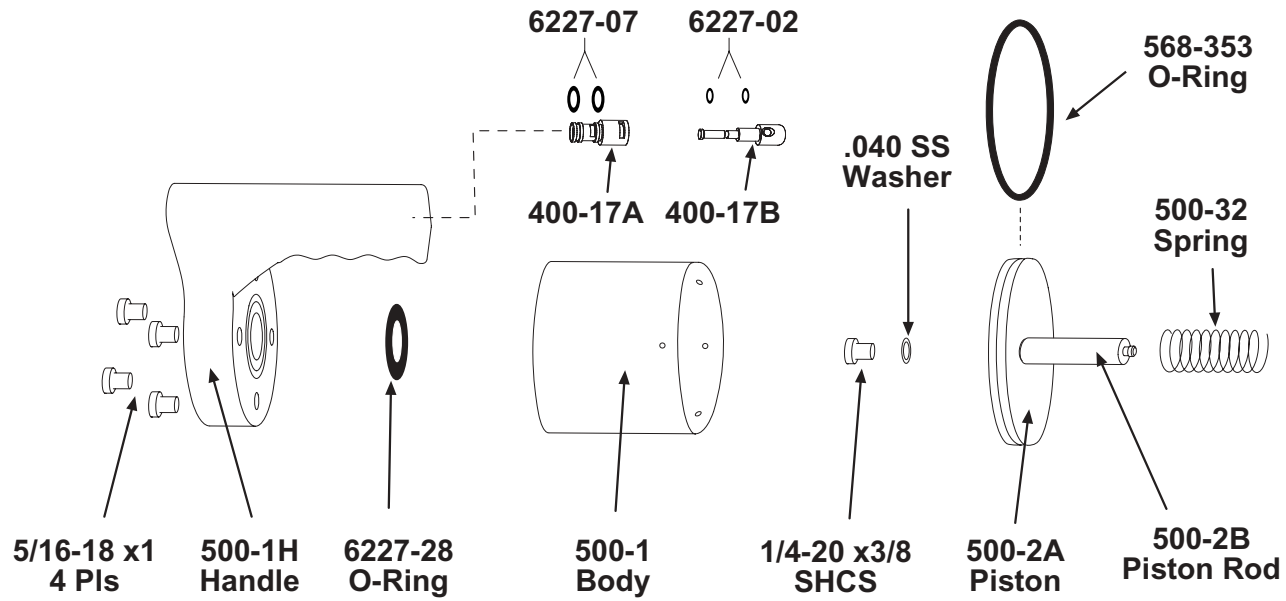


Model 500-D

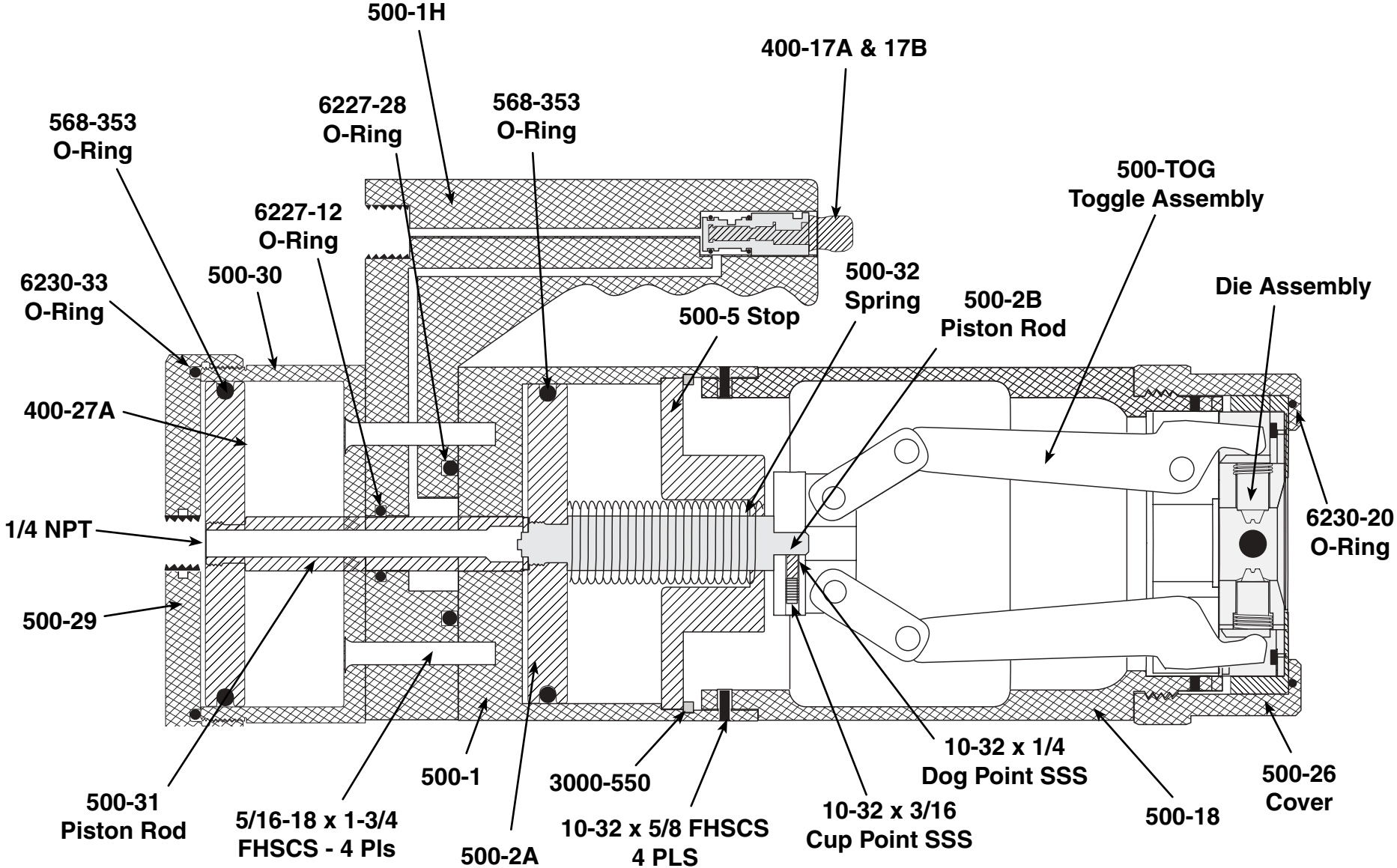
Model 500 Cross-section View



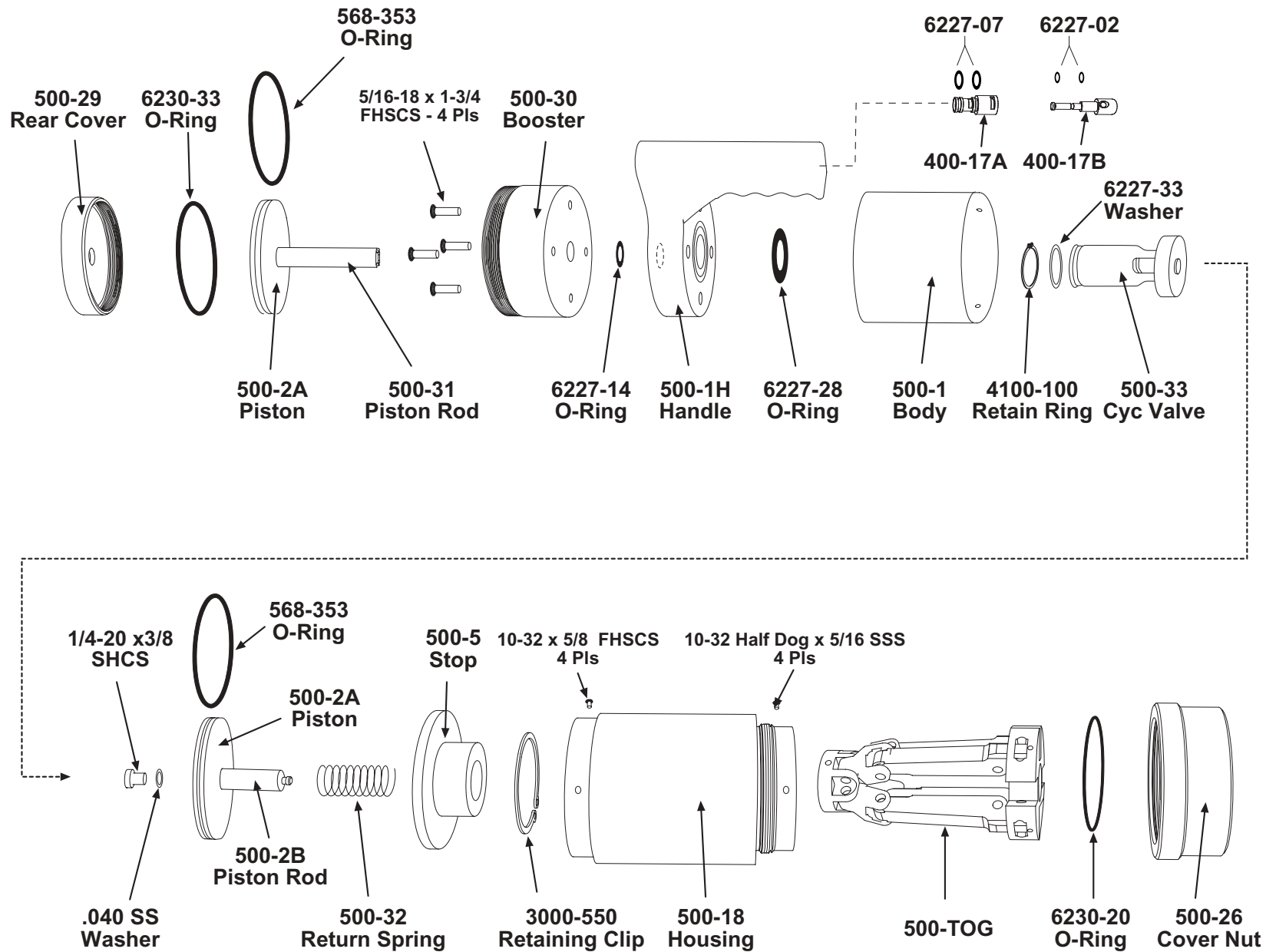
Model 500 Exploded View



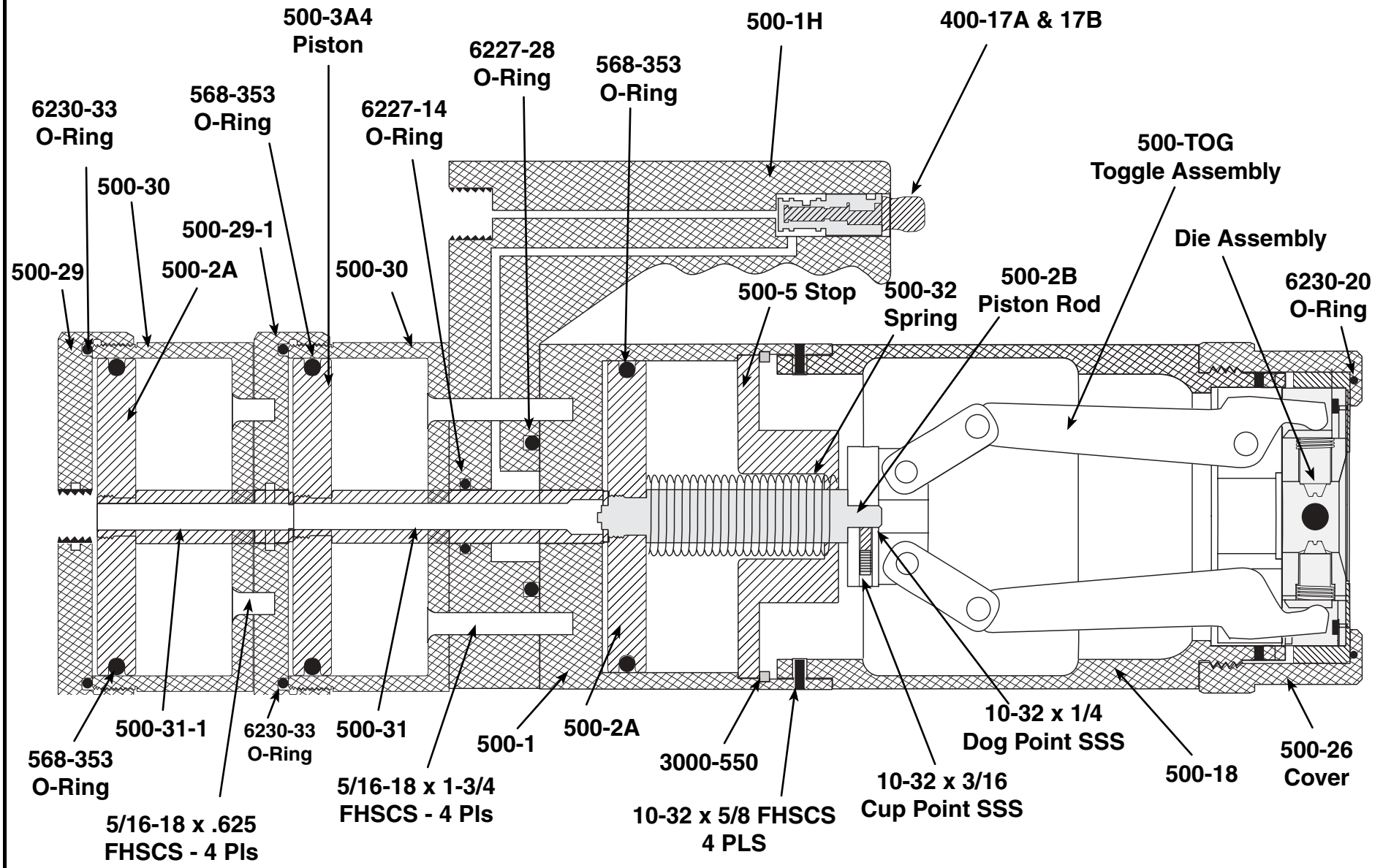
500-D Cross-section View



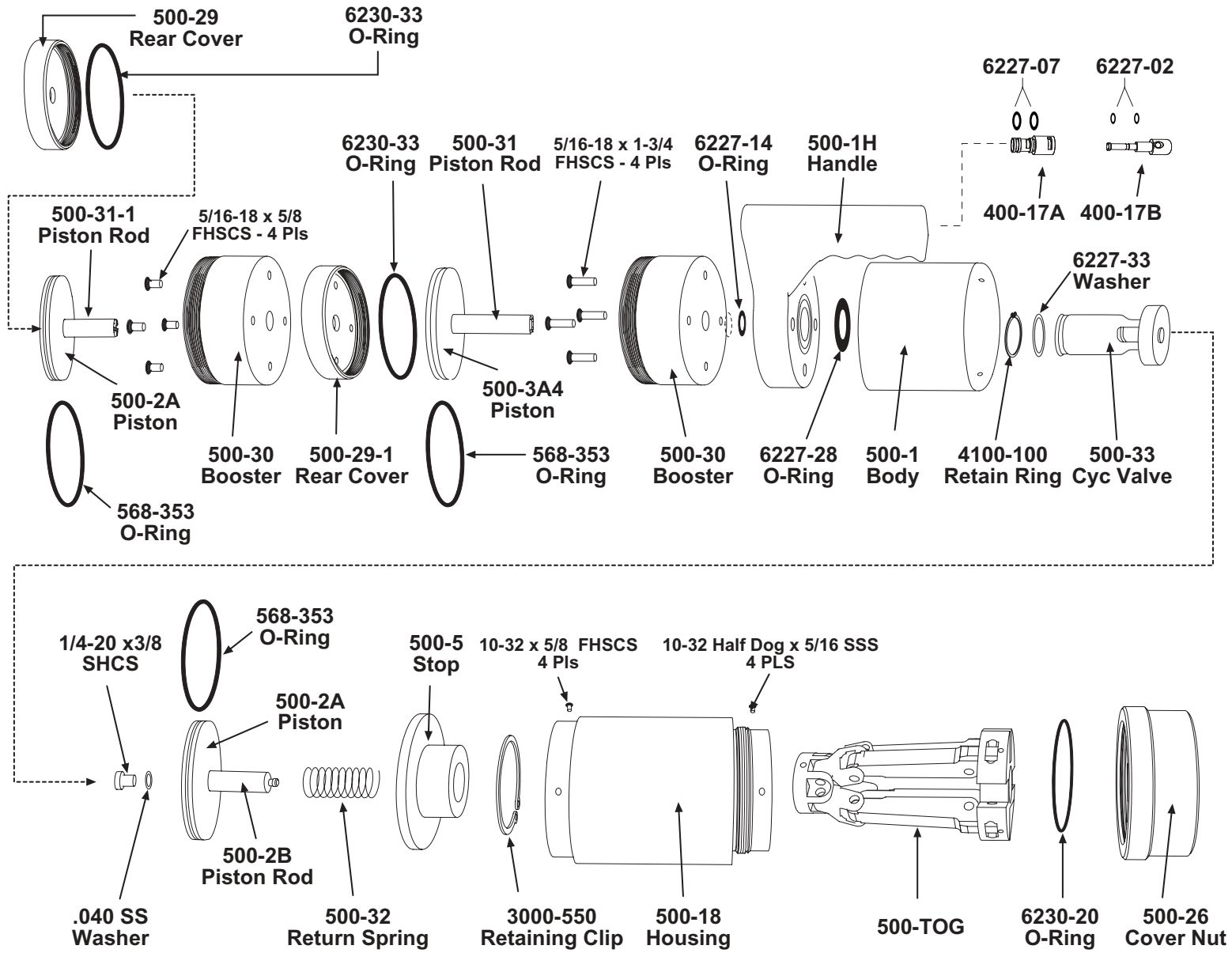
500-D Exploded View



500-D-1 Cross-section View

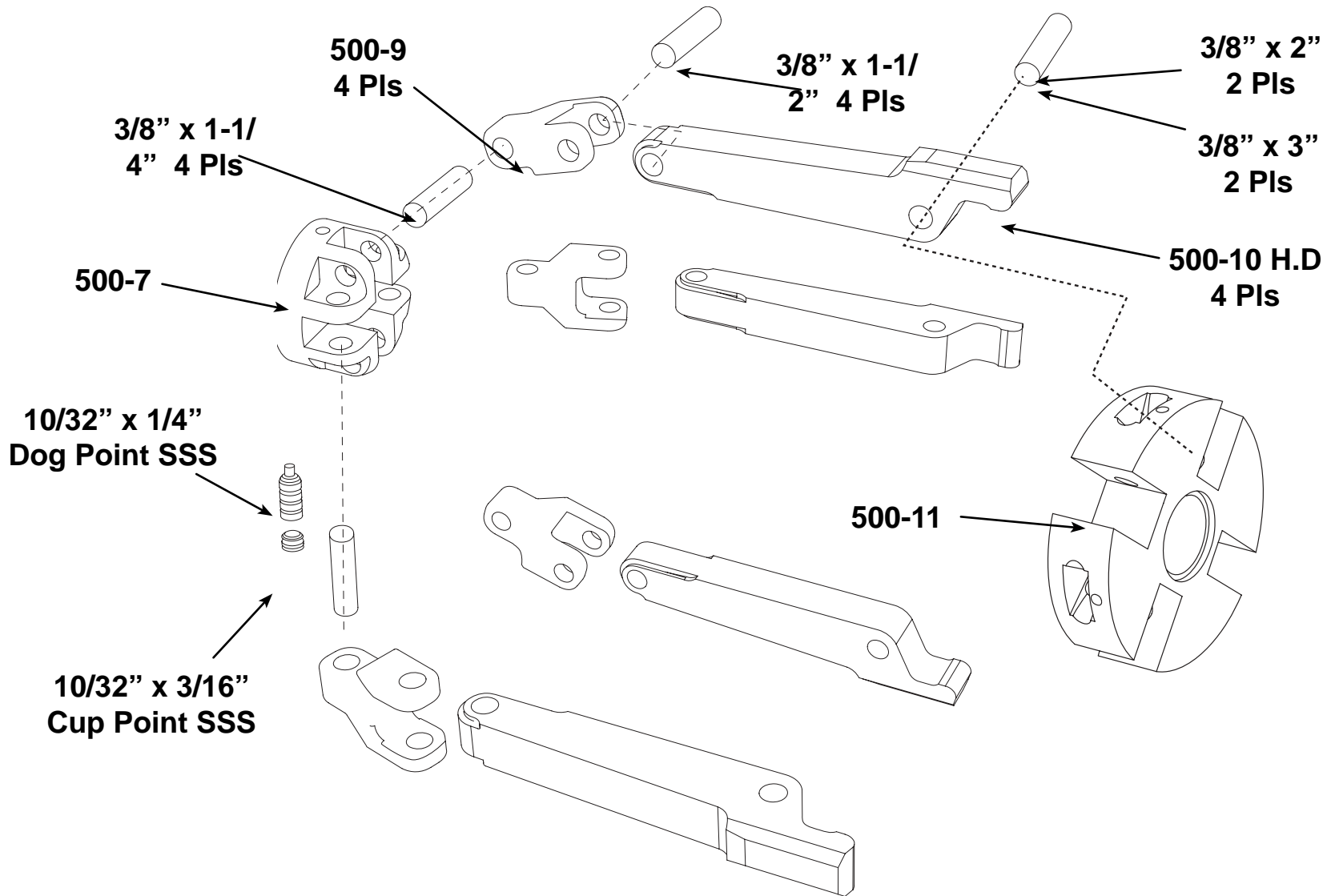


500-D-1 Exploded View



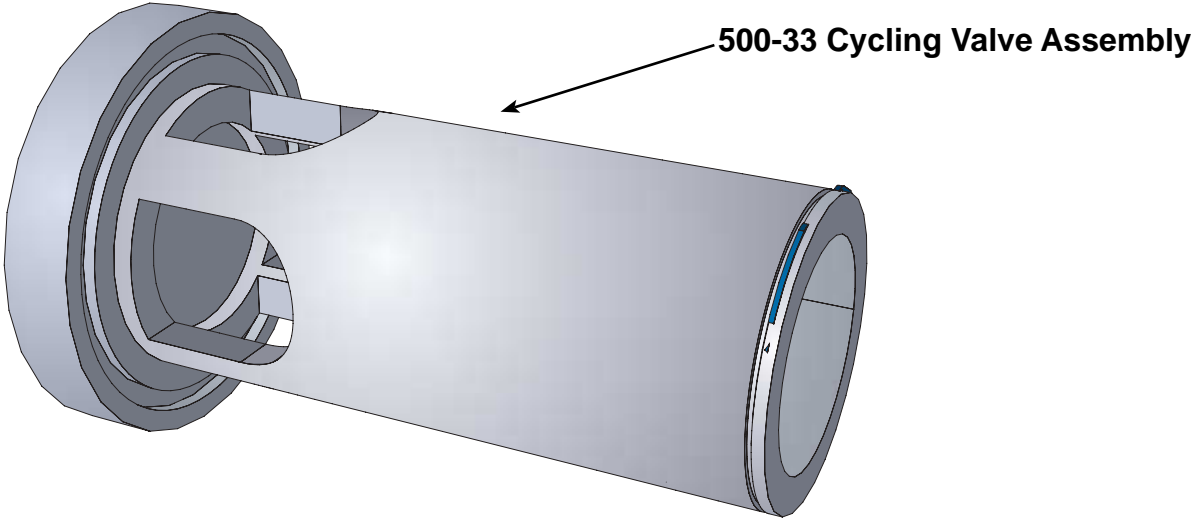
500-TOG Toggle Assembly

(all models)



500-33 Cycling Valve Assembly

(models 500-D & 500-D-1)

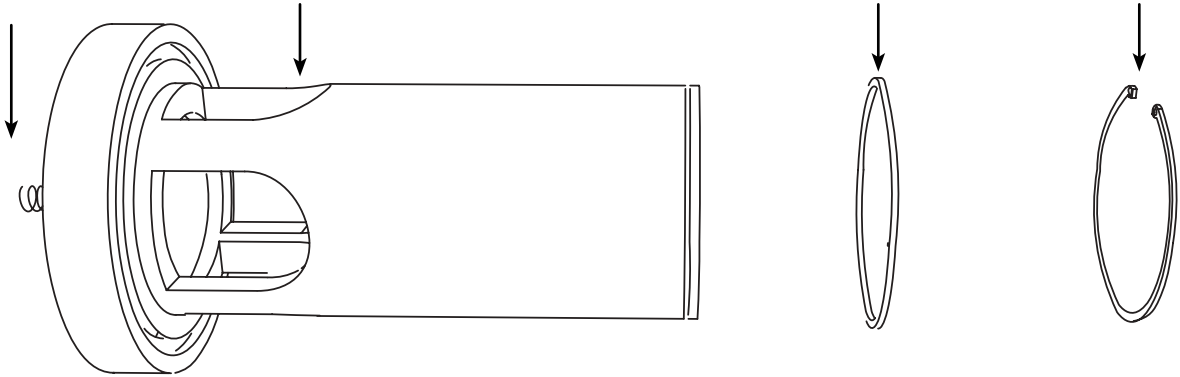


Spring

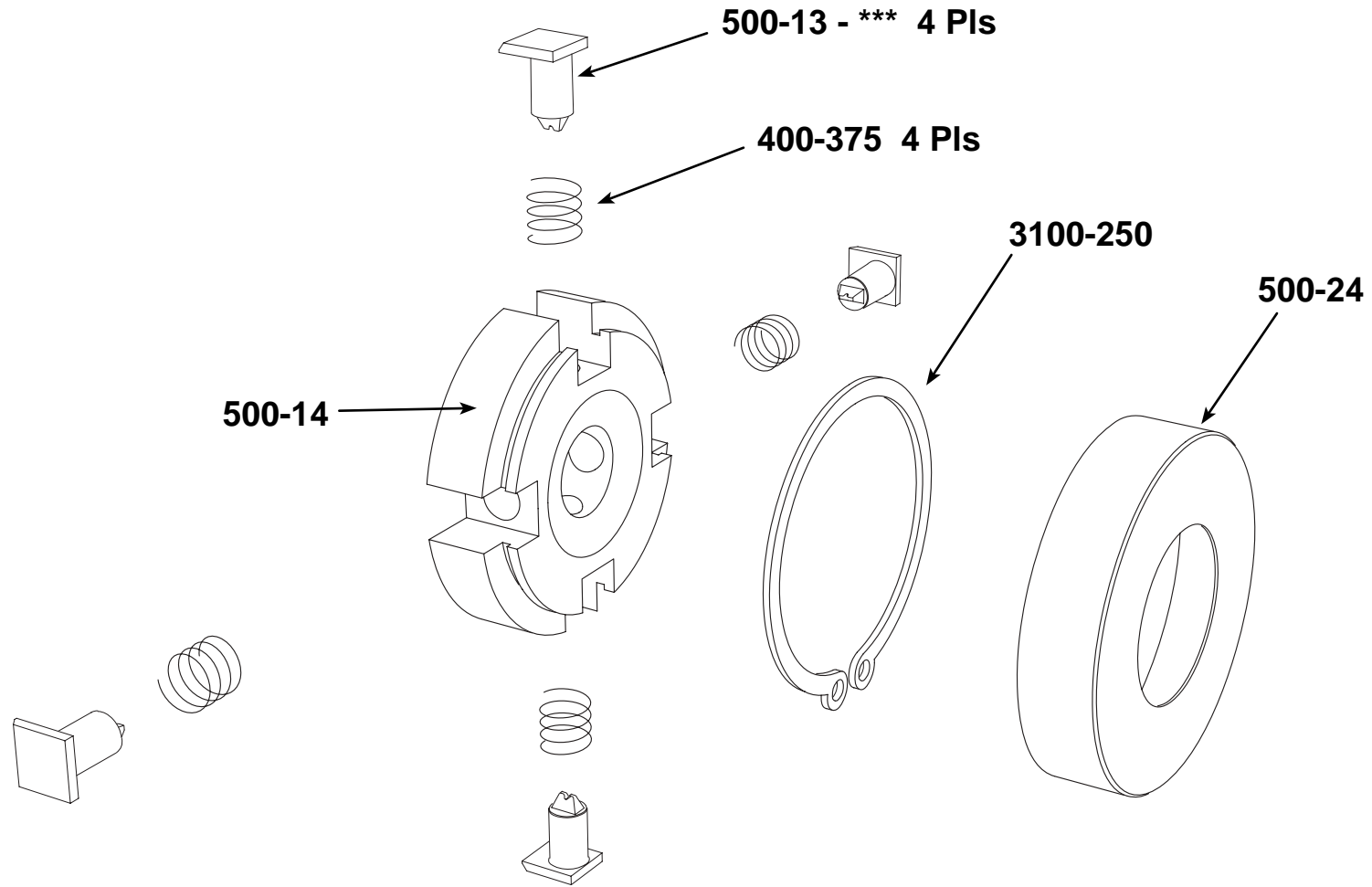
500-33 Body

6227-33
Washer

4100-100
Retaining Ring



Die Assembly



***** Specific Indentor Part Number
is determined by the Die Application**

PARTS LISTS • 500-D POWER UNIT

Part #	Description	Qty	Part #	Description	Qty
.040 SS Washer	Washer	1	500-TOG- continued		
1/4-20 x 3/8 SHCS	Socket Cap Screw	1			
10-32 x 5/16 FHSCS	Half Dog SSS	4	500-10-HD	Heavy Duty Arm	4
10-32 x 5/8 FHSCS	Flat Head Cap Screw	4	500-11	Retainer	1
5/16-18 x 1	Socket Cap Screws	1			
500-1	Body	1	3000-550	Retaining Ring	1
500-1H	Handle	1	568-353	O-Ring	1
500-2A	Front Piston	1	6227-02	O-Ring	2
500-2B	Front Piston Rod	1	6227-07	O-Ring	2
500-5	Piston Stop	1	6227-14	O-Ring	1
400-17A	Trigger Housing	1	6227-28	O-Ring	1
400-17B	Trigger Slide	1	6230-20	O-Ring	1
500-18	Front Housing	1			
500-26	Cover Nut	1			
500-29	Booster Cap	1			
500-31	Piston Rod	1			
500-32	Return Spring	1			
500-BM	Bench Mount	1			
500-TOG					
3/8 x 1-1/4	Dowel	4			
3/8 x 1-1/2	Dowel	4			
3/8 x 2	Dowel	2			
3/8 x 2	Dowel	2			
10-32 x 1/4 SSS	Cup Point Screw	1			
10-32 x 3/16 SSS	Dog Point Screw	1			
500-7	Rear Anchor	1			
500-9	Yoke	4			

PARTS LISTS • 500-D POWER UNIT

Part #	Description	Qty	Part #	Description	Qty
.040 SS Washer	Washer	1			
1/4-20 x 3/8 SHCS	Socket Cap Screw	1	500-TOG		
10-32 x 5/16 FHSCS	Half Dog SSS	4	3/8 x 1-1/4	Dowel	4
10-32 x 5/8 FHSCS	Flat Head Cap Screw	4	3/8 x 1-1/2	Dowel	4
5/16-18 x 1-3/4 FHSCS	Booster Body Cap Screw	4	3/8 x 2	Dowel	2
			3/8 x 2	Dowel	2
500-1	Body	1	10-32 x 1/4 SSS	Cup Point Screw	1
500-1H	Handle	1	10-32 x 3/16 SSS	Dog Point Screw	1
500-2A	Front Piston	2	500-7	Rear Anchor	1
500-2B	Front Piston Rod	1	500-9	Yoke	4
500-5	Piston Stop	1	500-10-HD	Heavy Duty Arm	4
400-17A	Trigger Housing	1	500-11	Retainer	1
400-17B	Trigger Slide	1			
500-18	Front Housing	1	3000-550	Retaining Ring	1
500-26	Cover Nut	1	568-353	O-Ring	2
500-29	Booster Cap	1	6227-02	O-Ring	2
500-30	Booster Body	1	6227-07	O-Ring	2
500-31	Piston Rod	1	6227-14	O-Ring	1
500-32	Return Spring	1	6227-28	O-Ring	1
			6230-20	O-Ring	1
500-33	Cycling Valve Assembly	1	6230-33	O-Ring	1
500-33	Cycling Valve Body	1			
6227-33	Washer	1			
4100-100	Retaining Ring	1			
500-BM	Bench Mount	1			

PARTS LISTS • 500-D-1 POWER UNIT

Part #	Description	Qty	Part #	Description	Qty
.040 SS Washer	Washer	1	500-BM	Bench Mount	1
1/4-20 x 3/8 SHCS	Socket Cap Screw	1			
10-32 x 5/16 FHSCS	Half Dog SSS	4	500-TOG		
10-32 x 5/8FHSCS	Flat Head Cap Screw	4	3/8 x 1-1/4	Dowel	4
5/16-18 x 5/8 FHSCS	Booster Body Cap Screw	4	3/8 x 1-1/2	Dowel	4
5/16-18 x 1-3/4 FHSCS	Booster Body Cap Screw	4	3/8 x 2	Dowel	2
			3/8 x 2	Dowel	2
500-1	Body	1	10-32 x 1/4 SSS	Cup Point Screw	1
500-1H	Handle	1	10-32 x 3/16 SSS	Dog Point Screw	1
500-2A	Front Piston	2	500-7	Rear Anchor	1
500-2B	Front Piston Rod	1	500-9	Yoke	4
500-3A4	Front Piston	1	500-10-HD	Heavy Duty Arm	4
500-5	Piston Stop	1	500-11	Retainer	1
400-17A	Trigger Housing	1			
400-17B	Trigger Slide	1	3000-550	Retaining Ring	1
500-18	Front Housing	1	568-353	O-Ring	3
500-26	Cover Nut	1	6227-02	O-Ring	2
500-29	Booster Cap	1	6227-07	O-Ring	2
500-29-1	Booster Cap	1	6227-14	O-Ring	1
500-30	Booster Body	2	6227-28	O-Ring	1
500-31	Piston Rod	1	6230-20	O-Ring	1
500-31-1	Piston Rod	1	6230-33	O-Ring	2
500-32	Return Spring	1			
500-33	Cycling Valve Assembly	1			
500-33	Cycling Valve Body	1			
6227-33	Washer	1			
4100-100	Retaining Ring	1			